

vorhanden

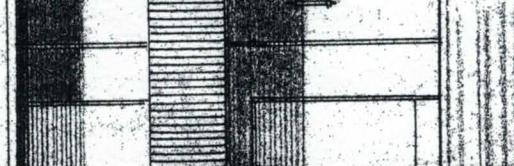
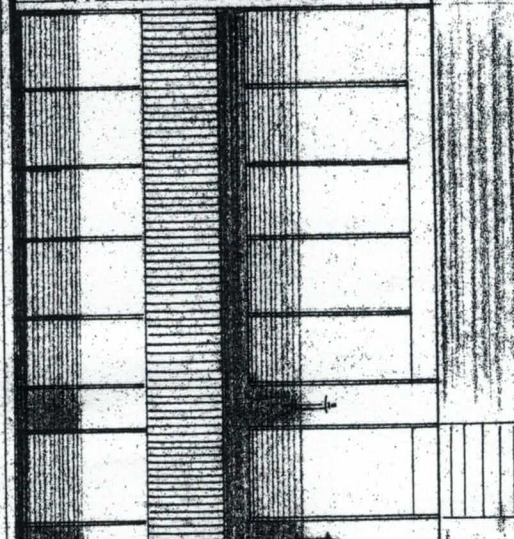
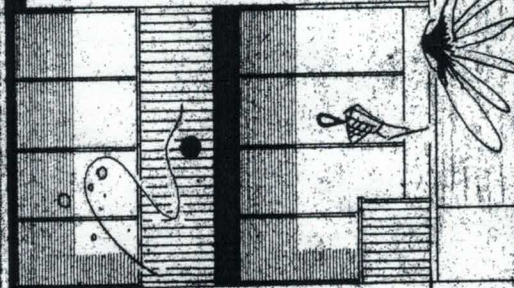
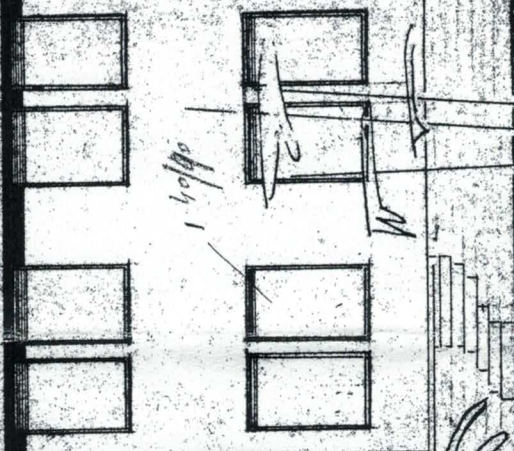
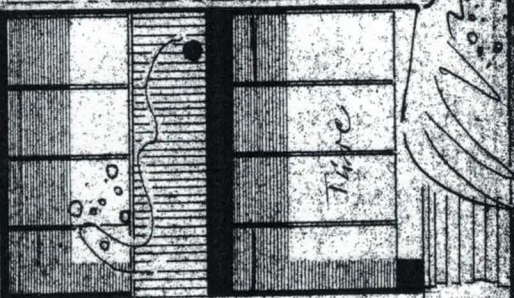
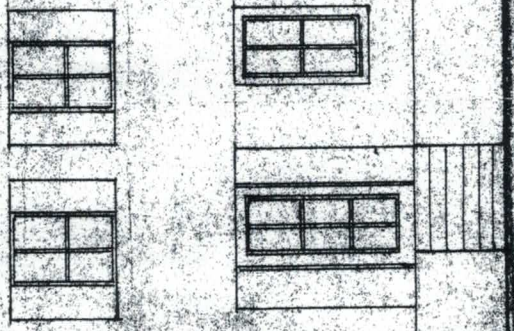
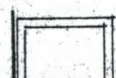
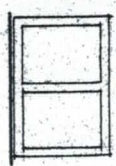
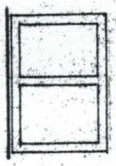
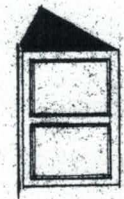
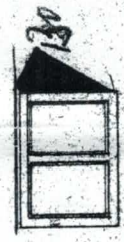
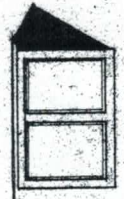
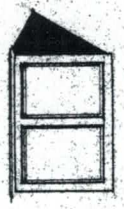
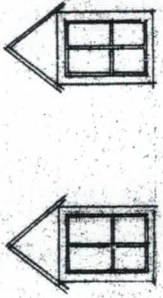
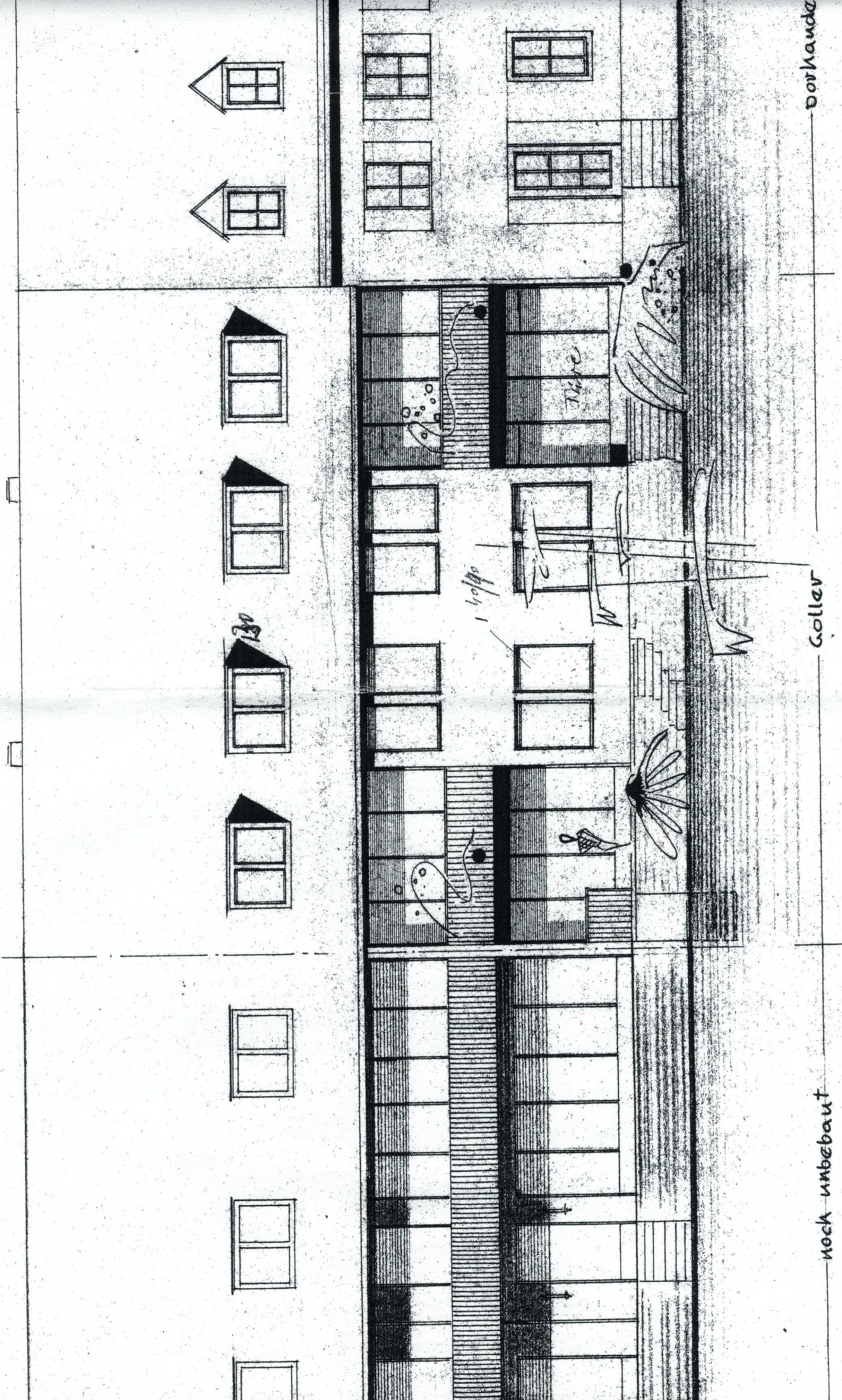
Gallar

2.20

noch unbo

1. nox 100



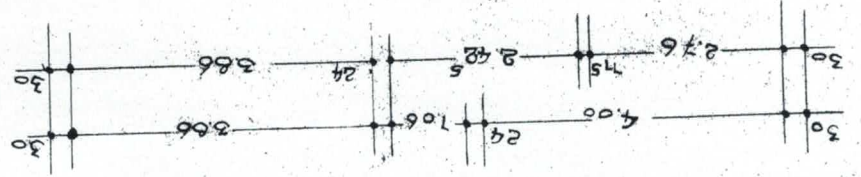
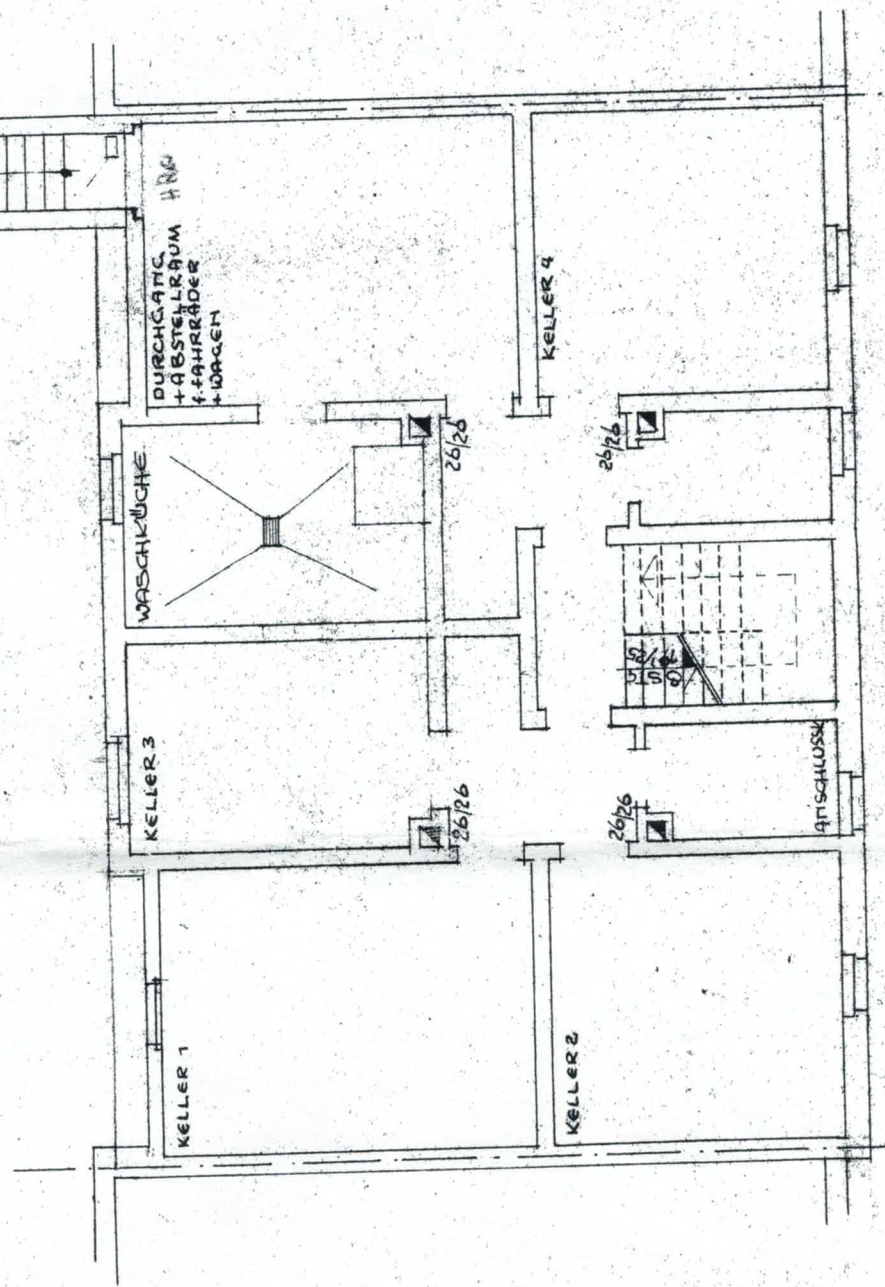
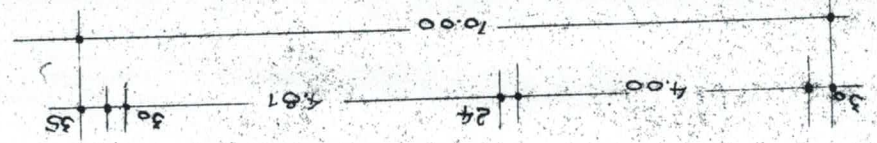
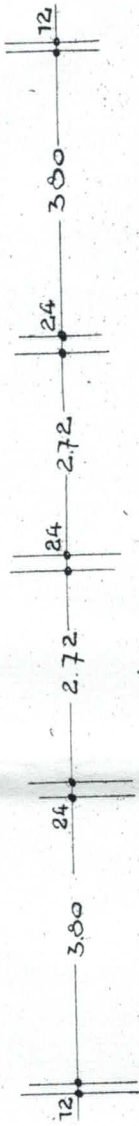


vorhanden

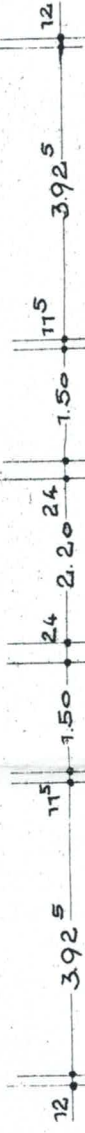
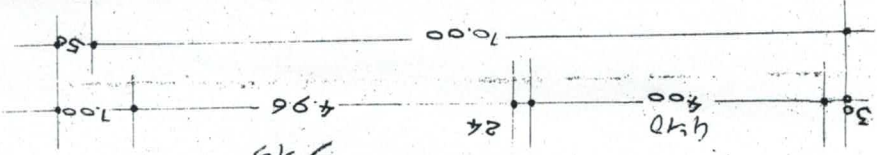
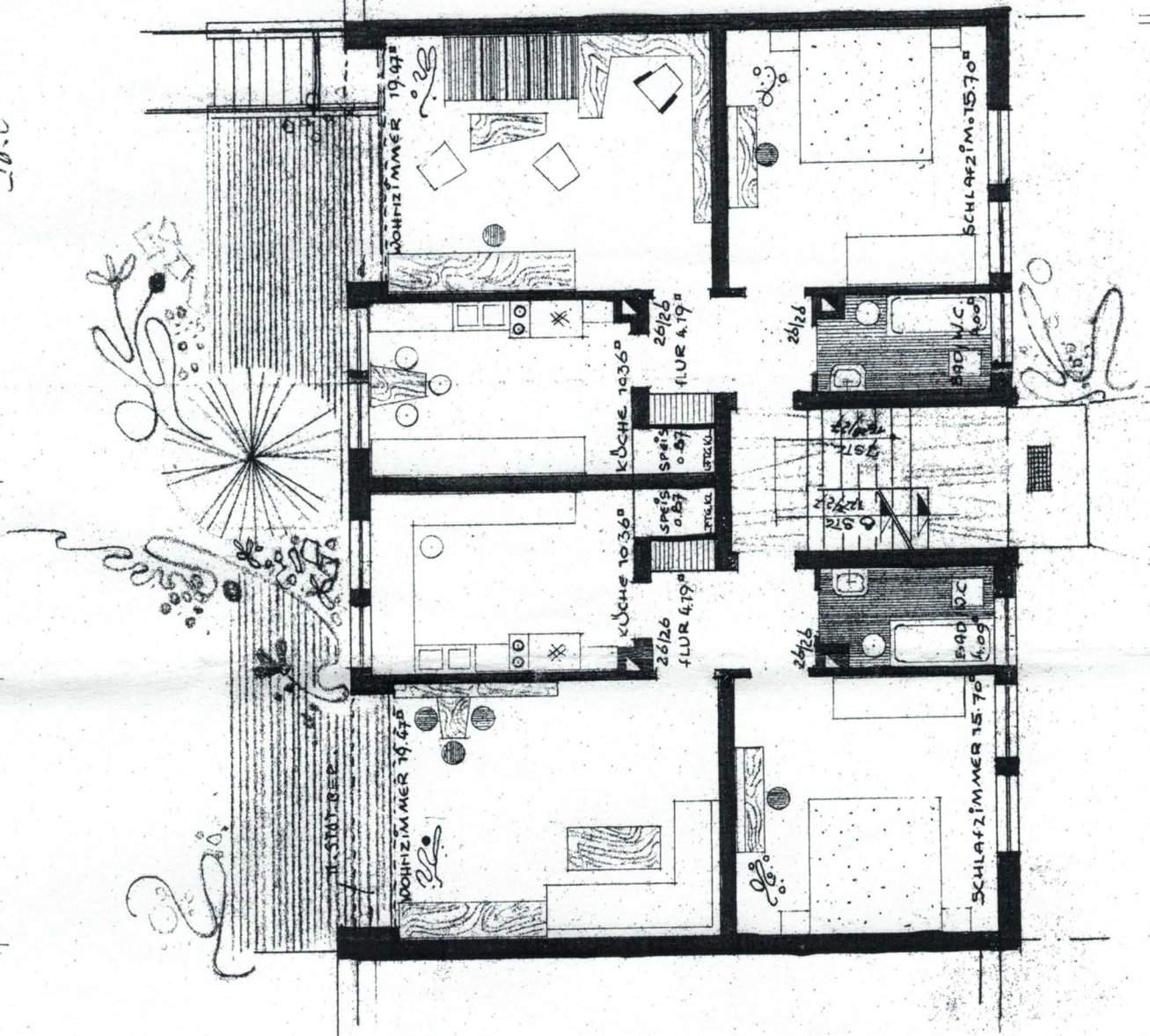
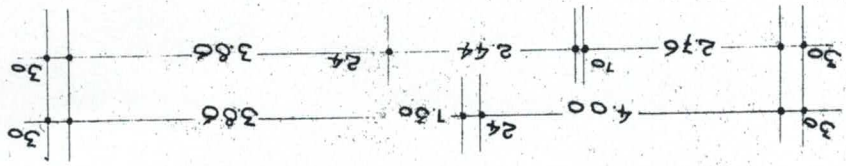
Goller

noch unbebaut





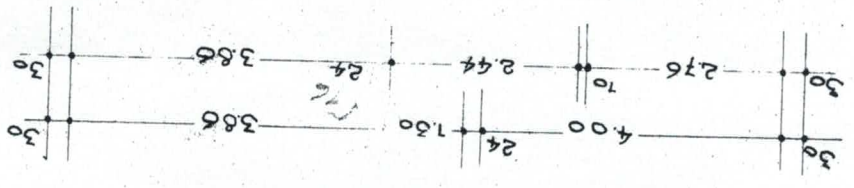
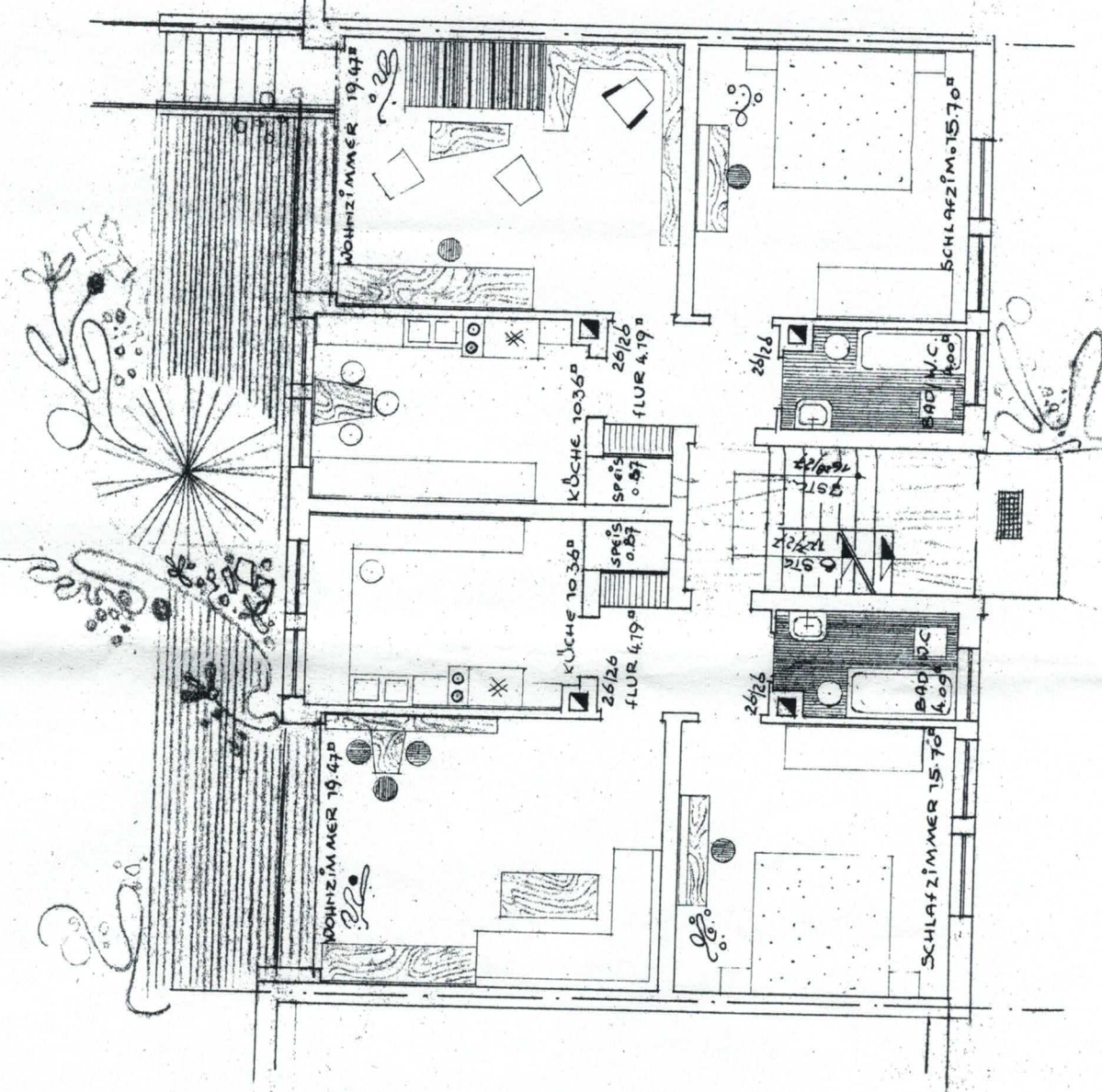
WOHNFÄCHE - 3 % PUTZ = 2 x 52,95 = 105,90<sup>m²</sup>





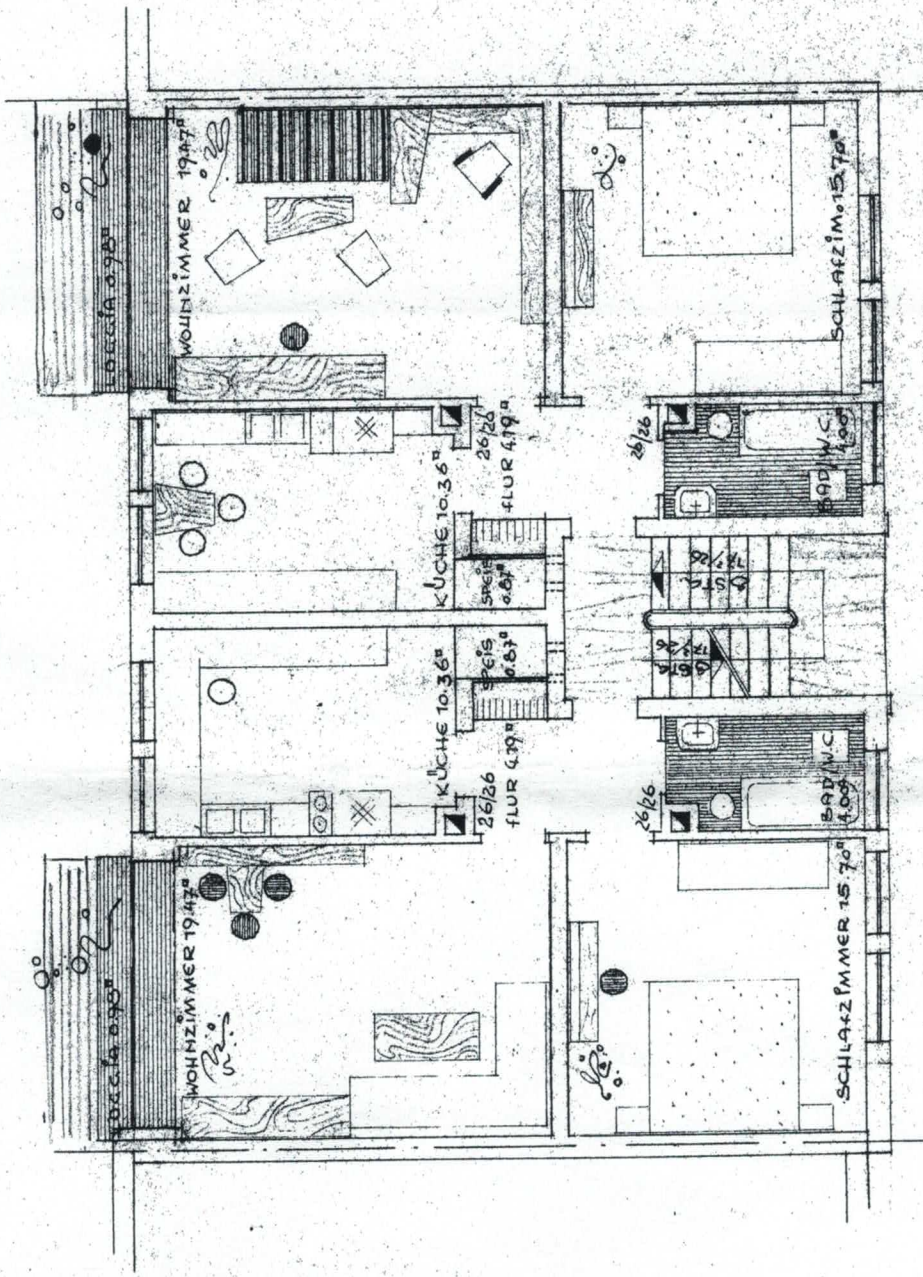
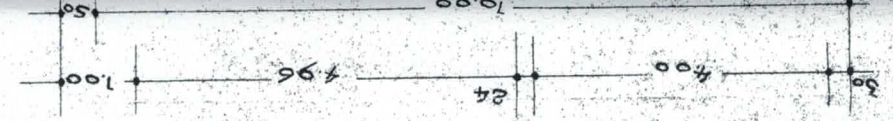
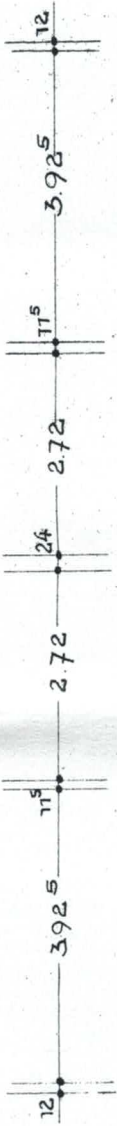


384  
384

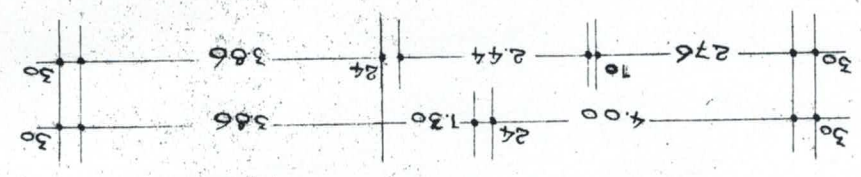


WOHNFÄCHE - 3 % PUTZ = 2 x 52,95 = 105,90



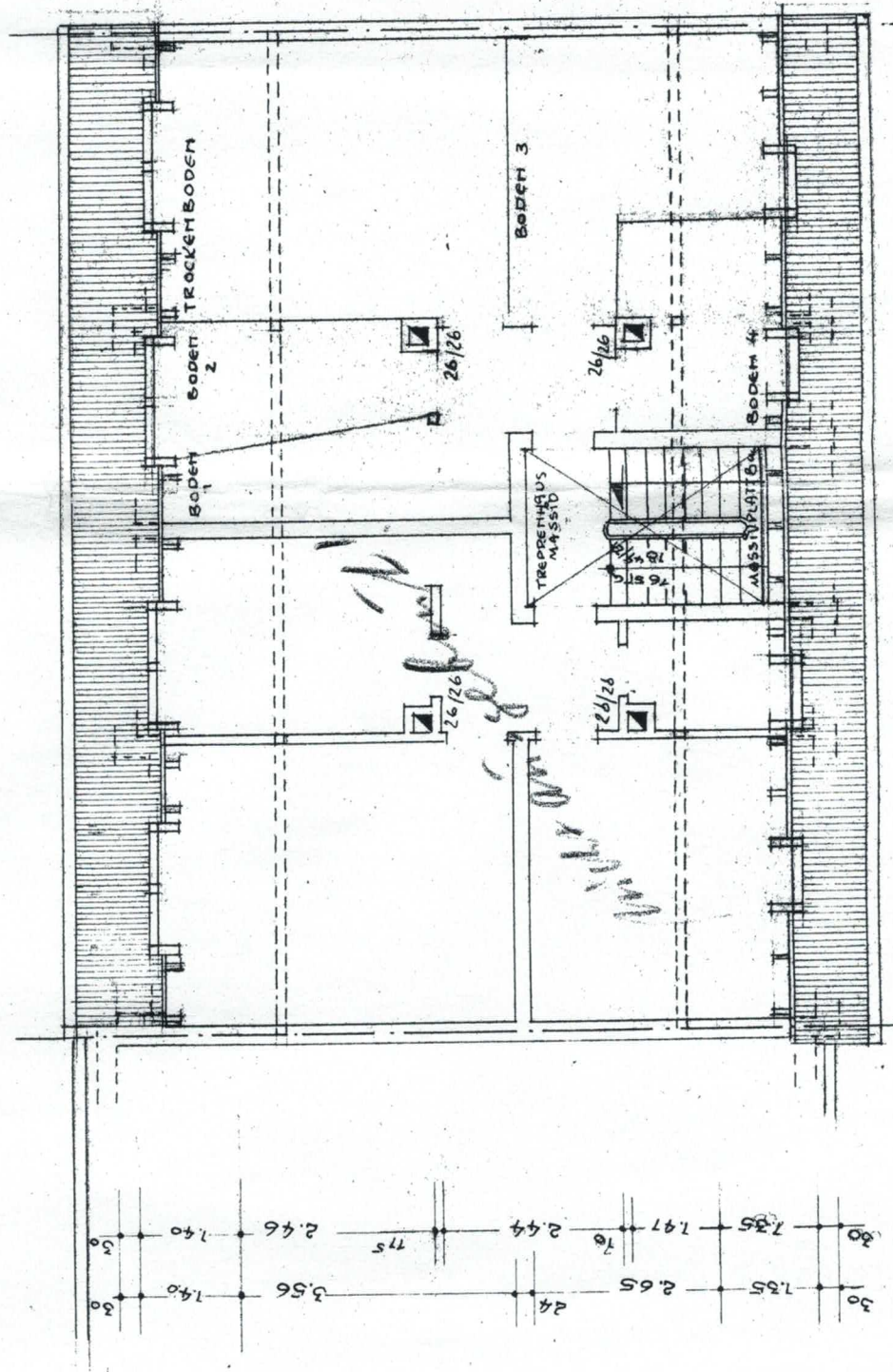


WOHNFÄCHE - 3% DUTZ = 2x53,90 = 107,80



12 | 12 | 3.92.5 | 11.5 | 2.72 | 2.4 | 2.72 | 11.5 | 3.92.5 | 12 | 12

10.00



12 | 12 | 3.92.5 | 11.5 | 2.4 | 2.4 | 2.4 | 11.5 | 3.92.5 | 12 | 12

30 | 1.35 | 2.65 | 24 | 3.56 | 1.40 | 30  
 30 | 7.35 | 1.97 | 70 | 2.44 | 75 | 2.46 | 1.40 | 30



MURBEREICH  
 MAUERWERK

- DACHDECKUNG / FLACHDACHSTUHL
- KEHLBALKENDACHSTUHL
- DACHNEIGUNG WIE BEIM ANGRÄNZER
- FIRSTHÖHE WIE VOR
- HOCHLOCHZIGEL ALS AUFGEHENDES MAUERWERK
- KALKSANDSTEINE ALS KELLERMAUERWERK
- FUNDAMENTE / STAMPFBETON BBO
- GESCHOSSEDECKEN / SYSTEM ZECH
- STÜRZE U. UNTERZÜGE N. STAT. BER.
- MASSIVTREPPEN MIT KUNSTSTEINBELAG

