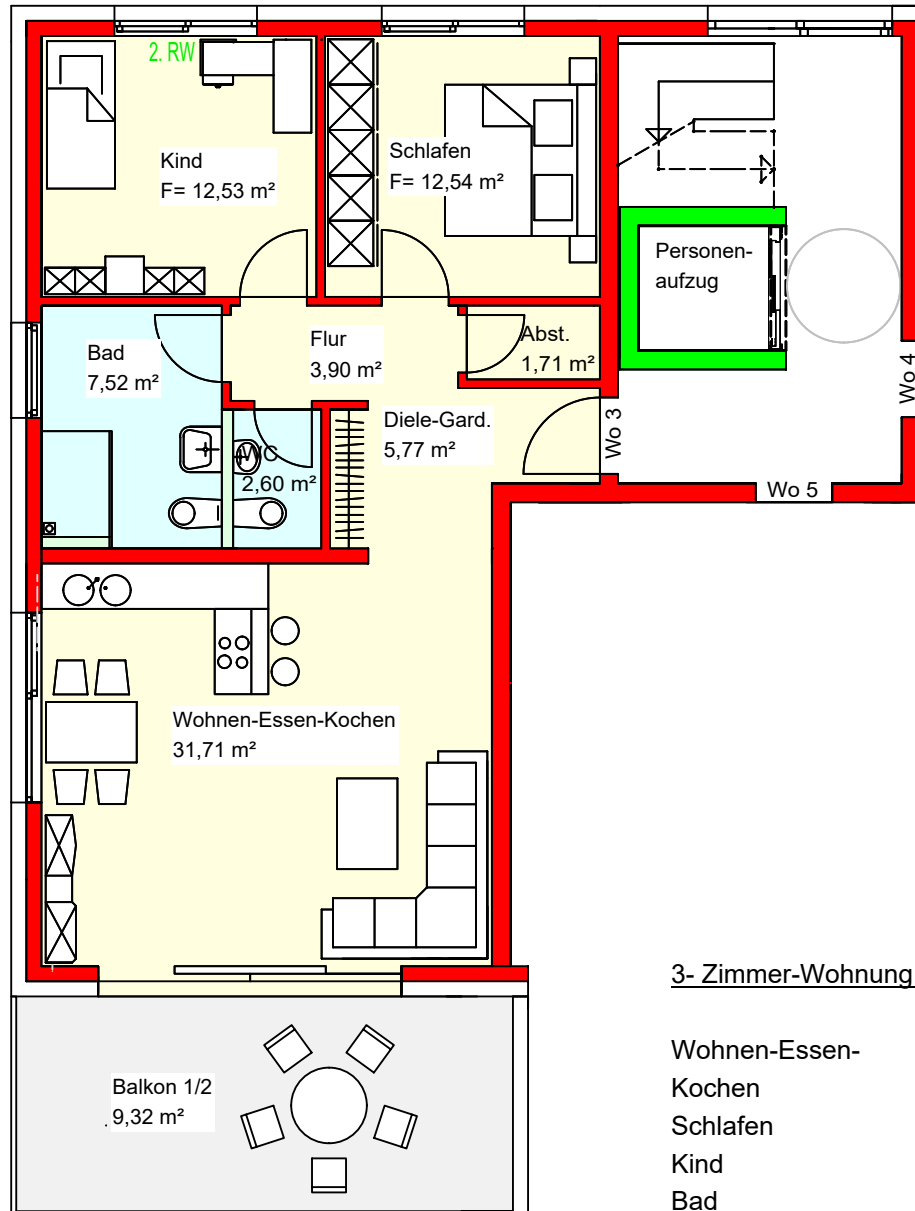
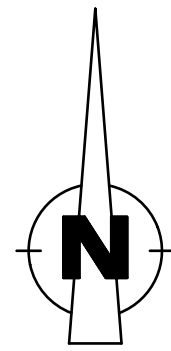


OBERGESCHOSS M: 1 : 100



3- Zimmer-Wohnung Nr. 6

Wohnen-Essen-	
Kochen	31,71 m <sup>2</sup>
Schlafen	12,54 m <sup>2</sup>
Kind	12,53 m <sup>2</sup>
Bad	7,52 m <sup>2</sup>
Gäste-WC	2,60 m <sup>2</sup>
Abstellraum	1,71 m <sup>2</sup>
Diele-Gard.	5,77 m <sup>2</sup>
	<u>74,38 m<sup>2</sup></u>
abzügl. 3 % Putz	<u>2,23 m<sup>2</sup></u>
	72,15 m <sup>2</sup>
Balkon 1/2	<u>9,32 m<sup>2</sup></u>
Wohnfläche Wo.6	81,47 m <sup>2</sup>