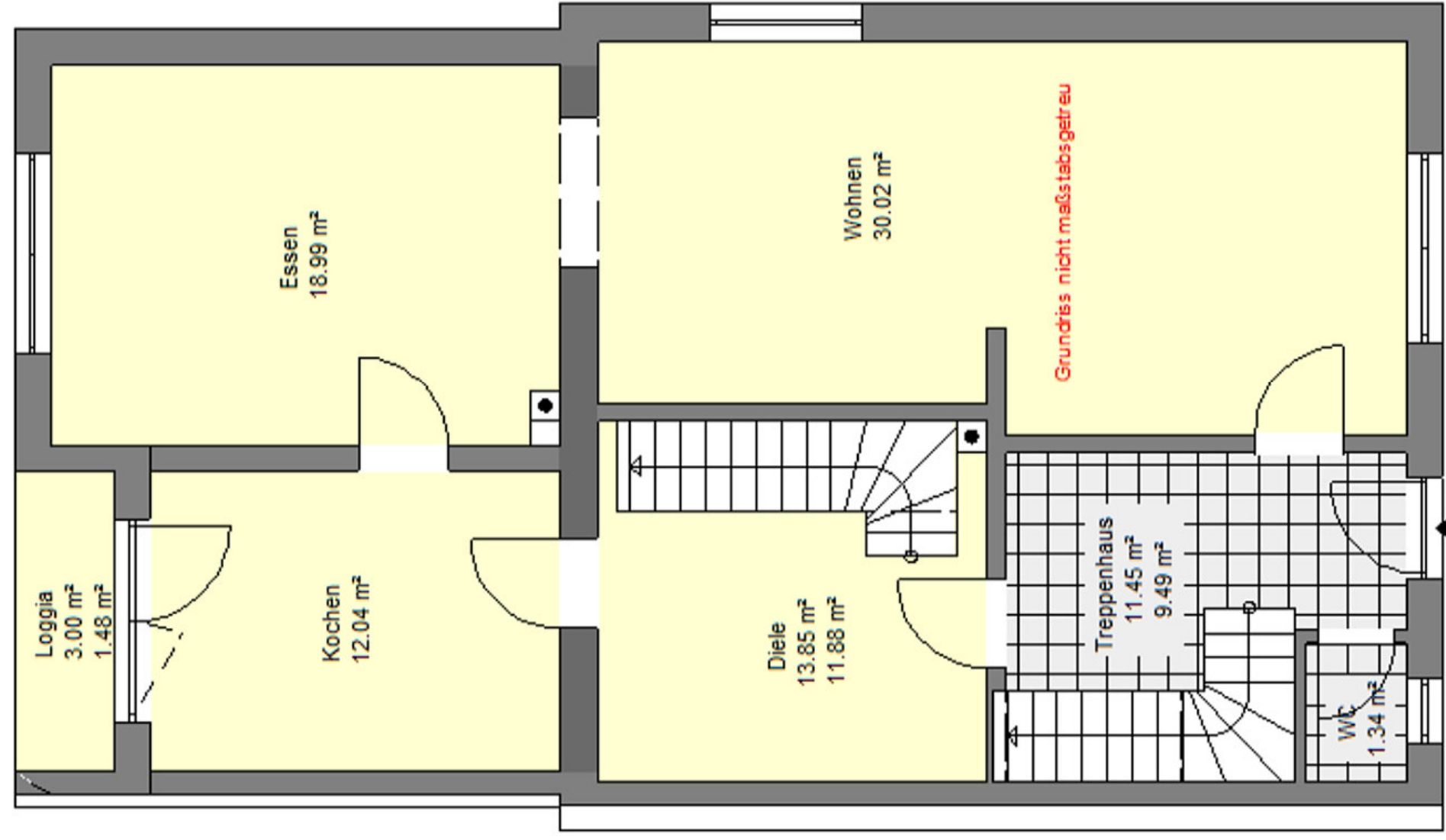


25,24 49⁵ 2,01 49⁵ 1,16 2,01 1,24 25,24 25,24
10 2,26 1,26



5.80 1.51 1.26 1.49 14.25 5.45

14.25

25,62⁵ 63⁵ 1,00 1,01 1,35⁵ 1,88⁵ 1,49
63⁵ 2,13⁵ 1,26