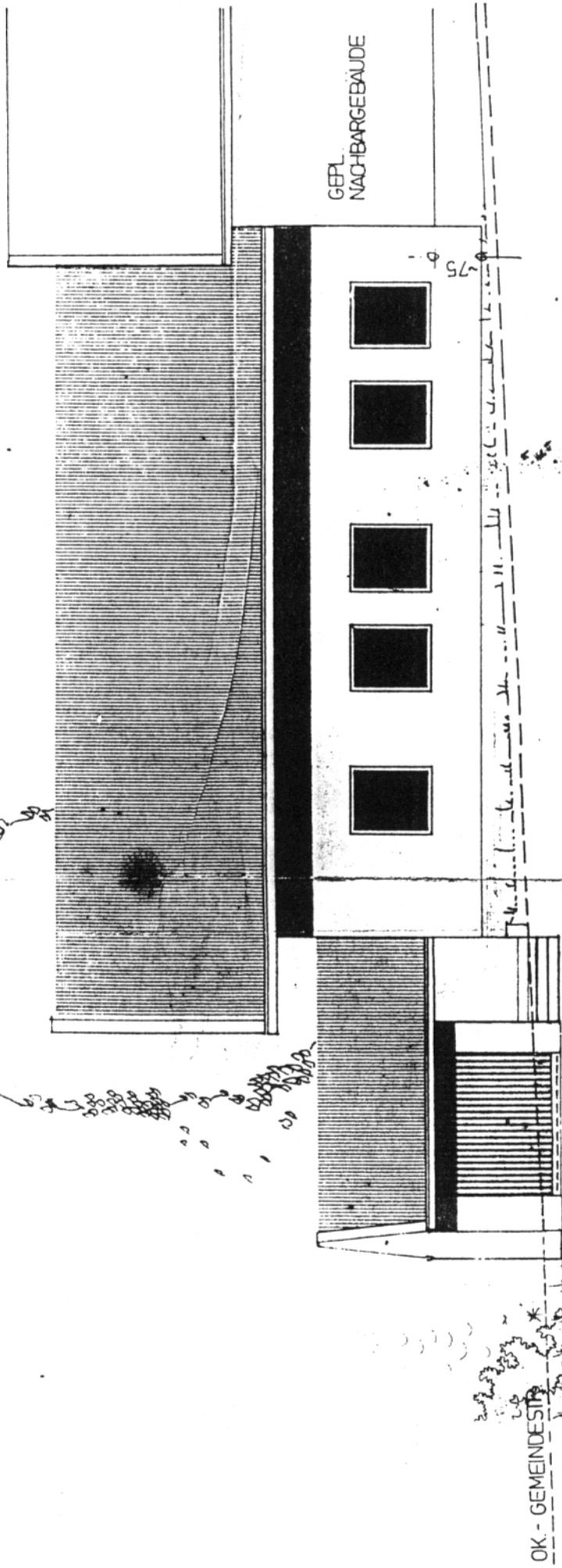


ANSICHT VON NORDEN



GEPL.
NACHBARGEBAUDE

75

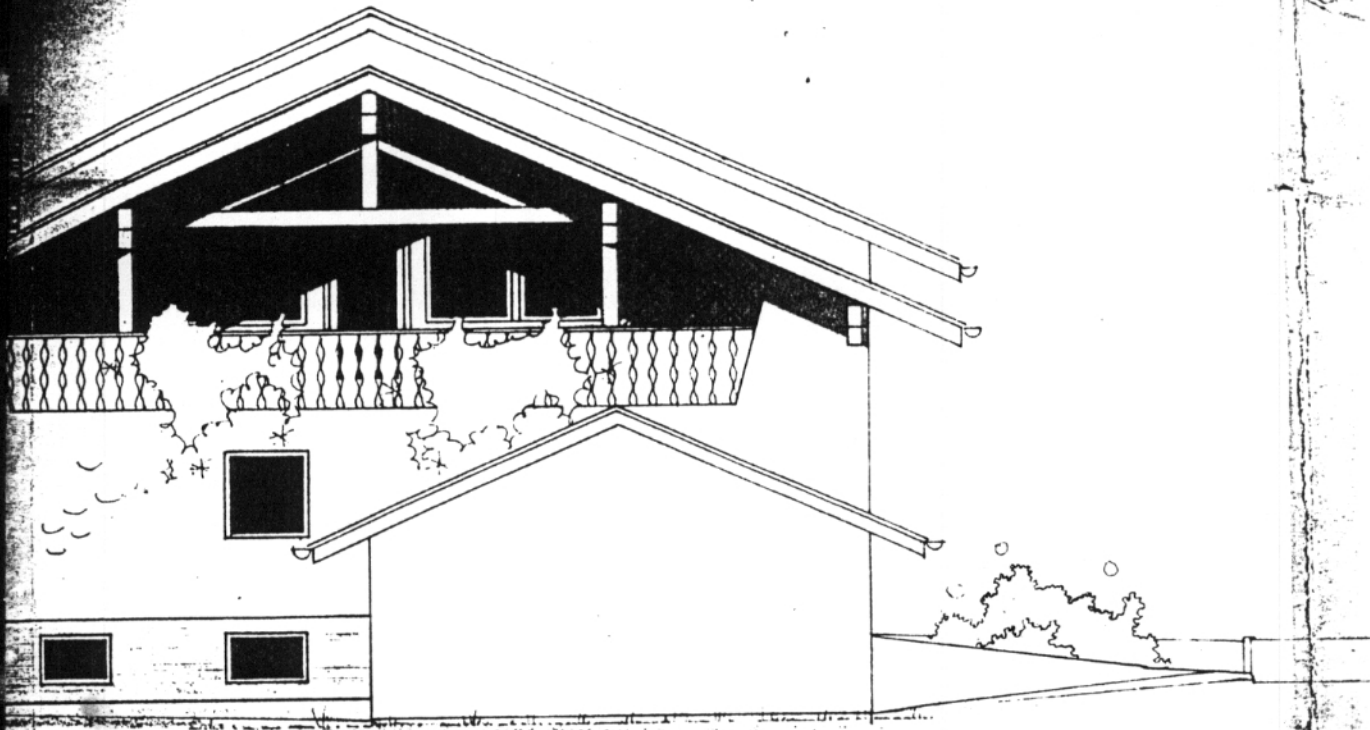
hveigen

OK - GEMEINDESTR.

ANSICHT VON WESTEN

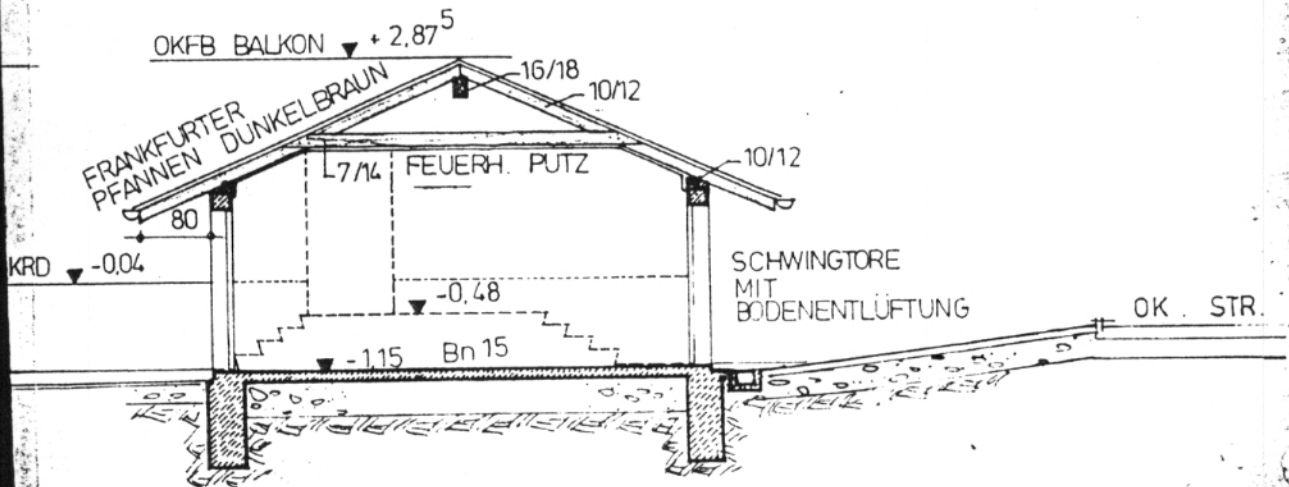
TEKTURPLA.N

M 1 : 100

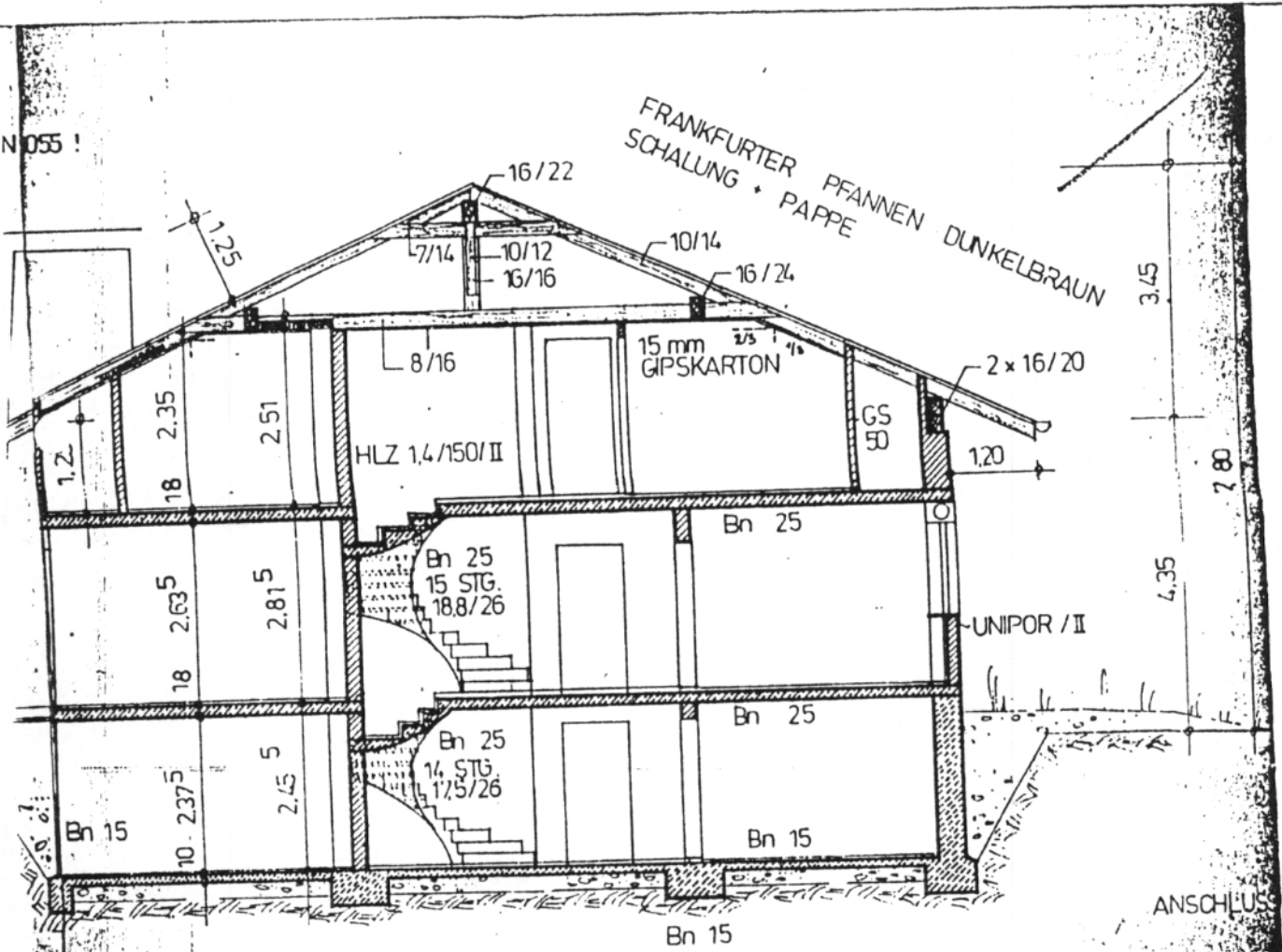


HT VON NORDEN

DACHNEIGUNG 24°
 VERANKERUNG NACH DIN 1055 !



N 055 !



SCHNITT A - B

Höhenschnitt