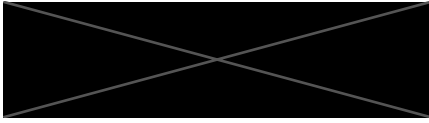


EFH



ERSTELLT AM
2023-11-04

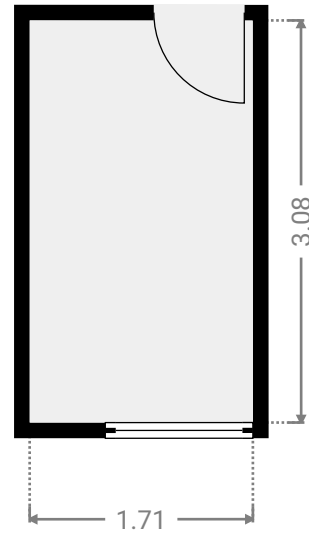
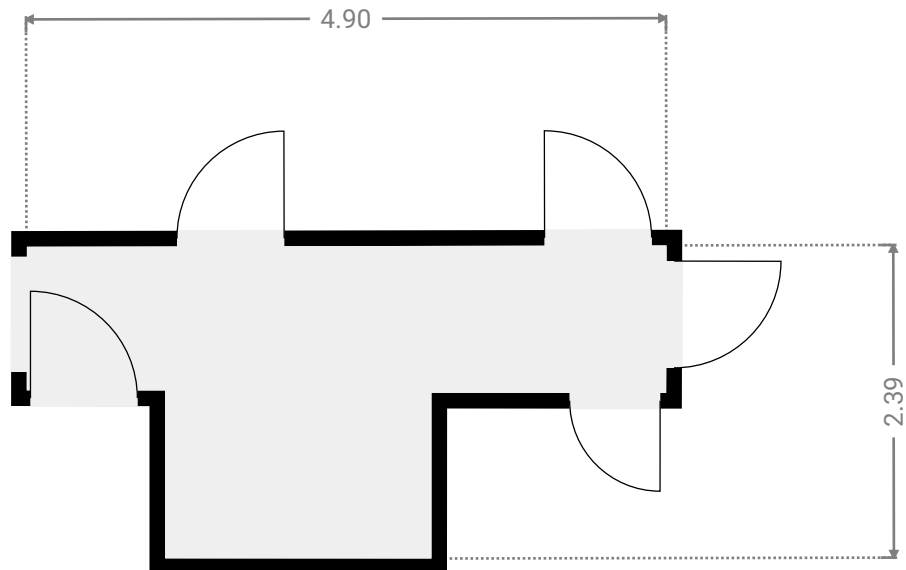
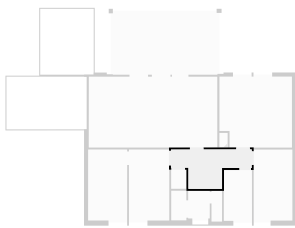
STANDORT
Am Hirtenanger 24
90518 Altdorf bei Nürnberg
Bayern
Deutschland

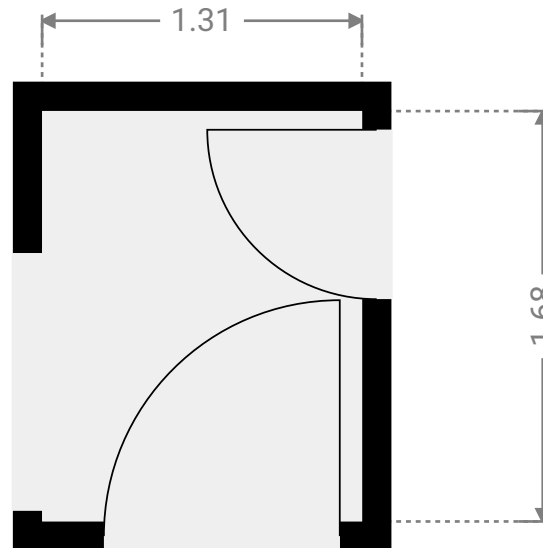
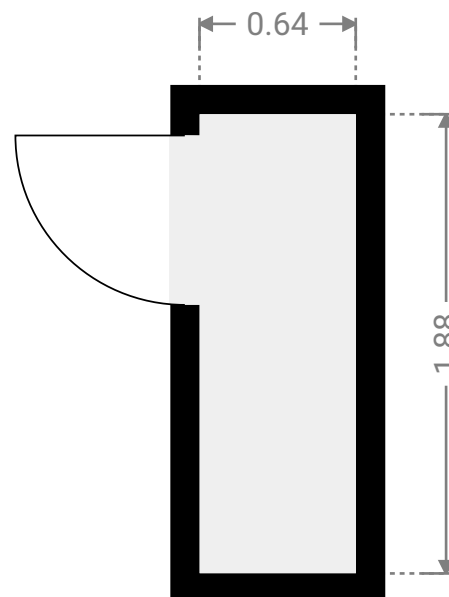


Stockwerke
3

▼ Erdgeschoss

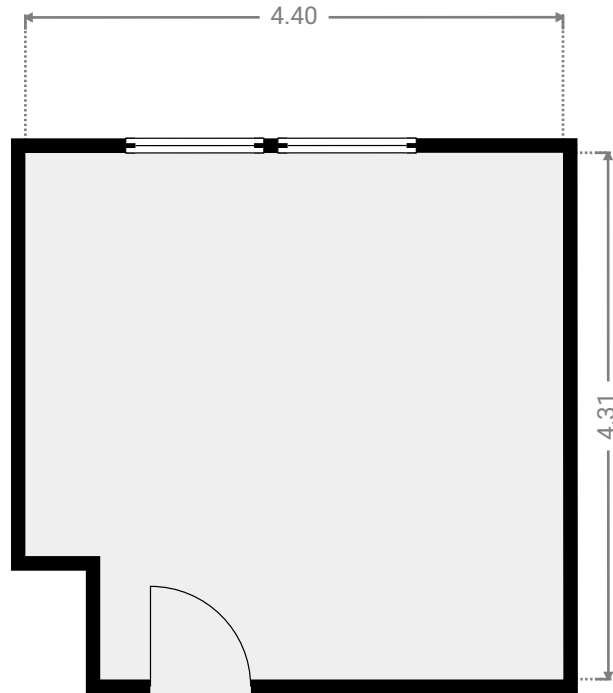


▼ **Badezimmer**
ErdgeschossBREITE: 1.71 m · LÄNGE: 3.08 m
BEREICH: 5.26 m² · UMFANG: 9.58 m▼ **Diele**
ErdgeschossBREITE: 4.90 m · LÄNGE: 2.39 m
BEREICH: 8.08 m² · UMFANG: 14.59 m

▼ **Eingangsflur**
ErdgeschossBREITE: 1.31 m · LÄNGE: 1.68 m
BEREICH: 2.20 m² · UMFANG: 5.98 m▼ **Abstellraum**
ErdgeschossBREITE: 0.64 m · LÄNGE: 1.88 m
BEREICH: 1.20 m² · UMFANG: 5.04 m

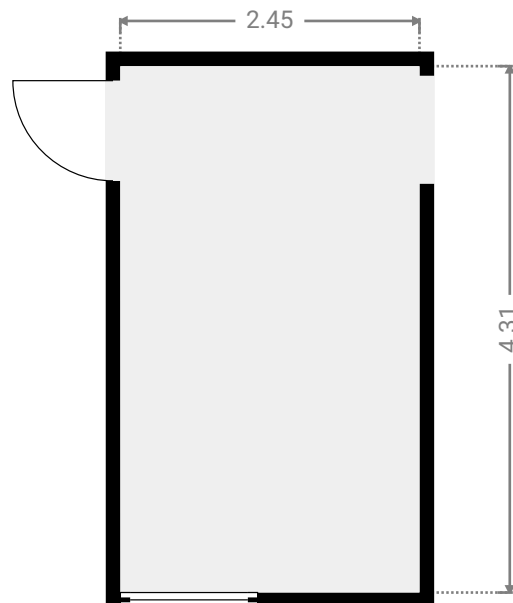
▼ **Elternschlafzimmer**
Erdgeschoss

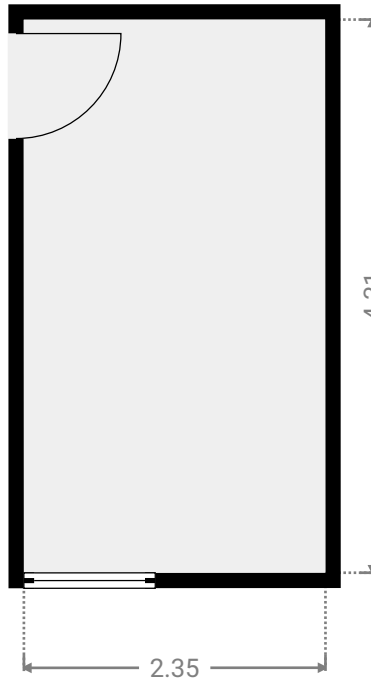
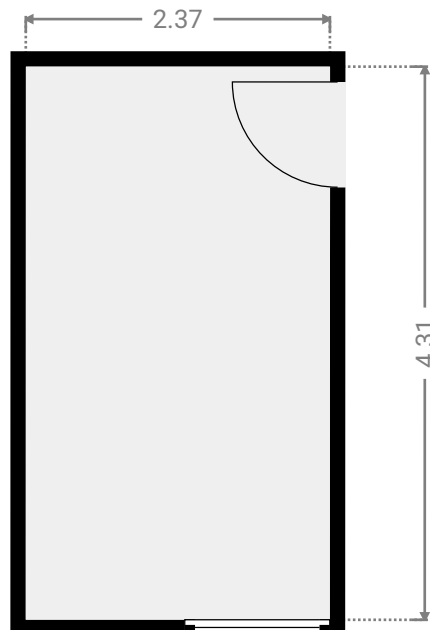
BREITE: 4.40 m • LÄNGE: 4.31 m
BEREICH: 18.35 m² • UMFANG: 17.42 m

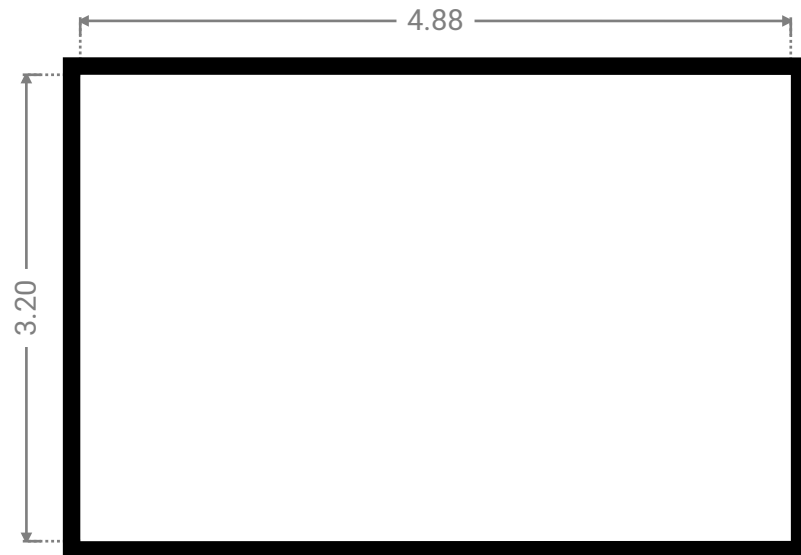
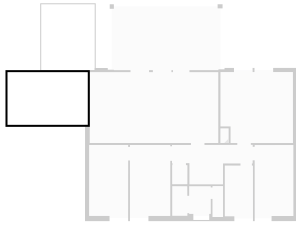
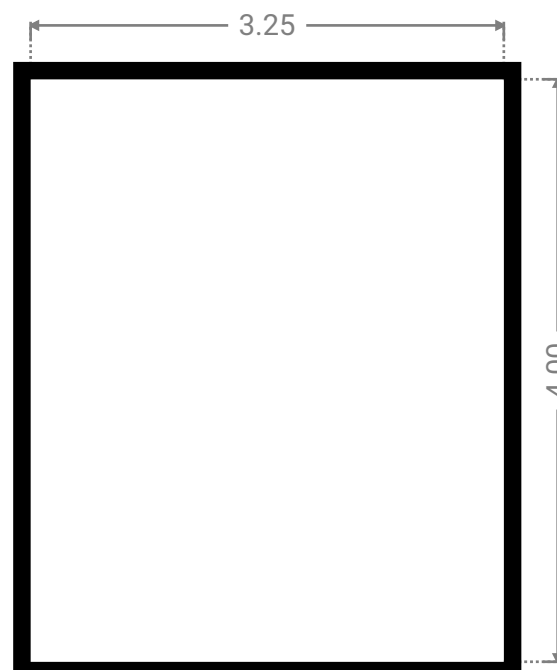
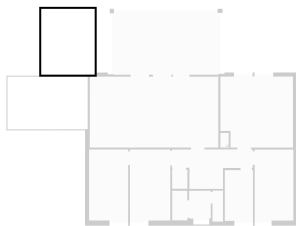


▼ **Esszimmer**
Erdgeschoss

BREITE: 2.45 m • LÄNGE: 4.31 m
BEREICH: 10.56 m² • UMFANG: 13.52 m

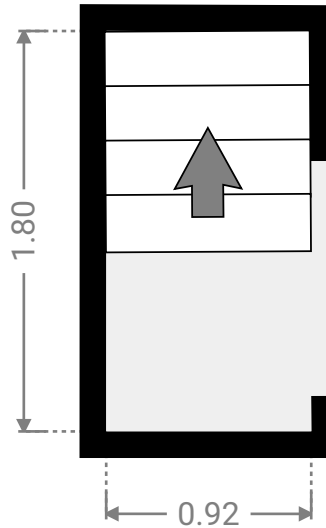


▼ **Kinderzimmer**
ErdgeschossBREITE: 2.35 m • LÄNGE: 4.31 m
BEREICH: 10.13 m² • UMFANG: 13.32 m▼ **Küche**
ErdgeschossBREITE: 2.37 m • LÄNGE: 4.31 m
BEREICH: 10.21 m² • UMFANG: 13.36 m

▼ **Terrasse**
ErdgeschossBREITE: 4.88 m • LÄNGE: 3.20 m
BEREICH: 15.62 m² • UMFANG: 16.16 m▼ **Terrasse**
ErdgeschossBREITE: 3.25 m • LÄNGE: 4.00 m
BEREICH: 13.00 m² • UMFANG: 14.50 m

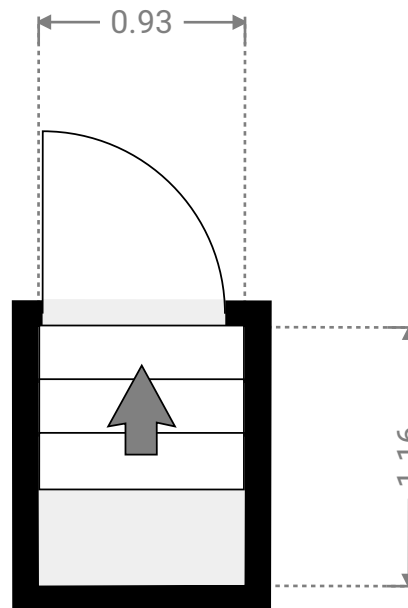
▼ Treppenhaus Erdgeschoss

BREITE: 0.92 m · LÄNGE: 1.80 m
BEREICH: 1.65 m² · UMFANG: 5.42 m



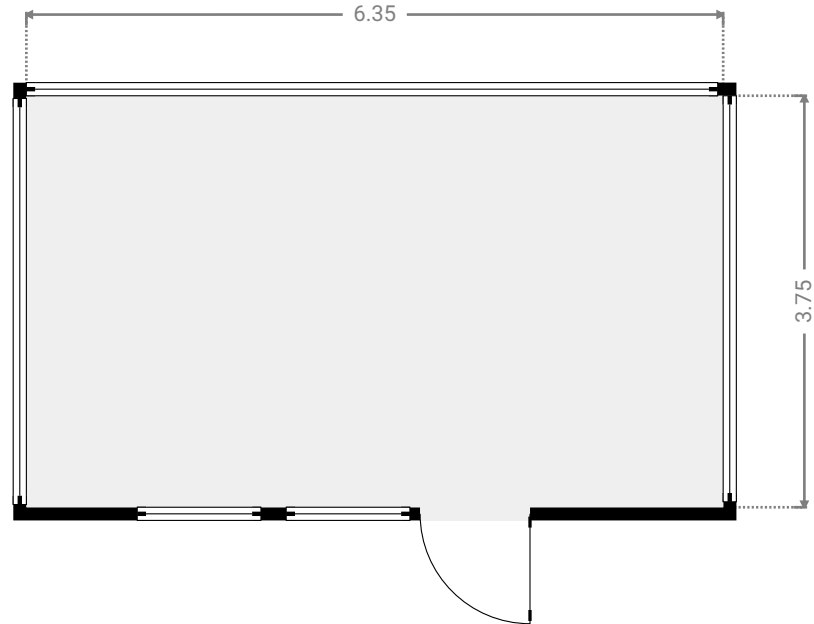
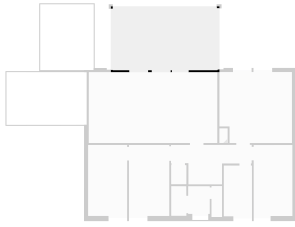
▼ Treppenhaus Erdgeschoss

BREITE: 0.93 m · LÄNGE: 1.16 m
BEREICH: 1.07 m² · UMFANG: 4.17 m



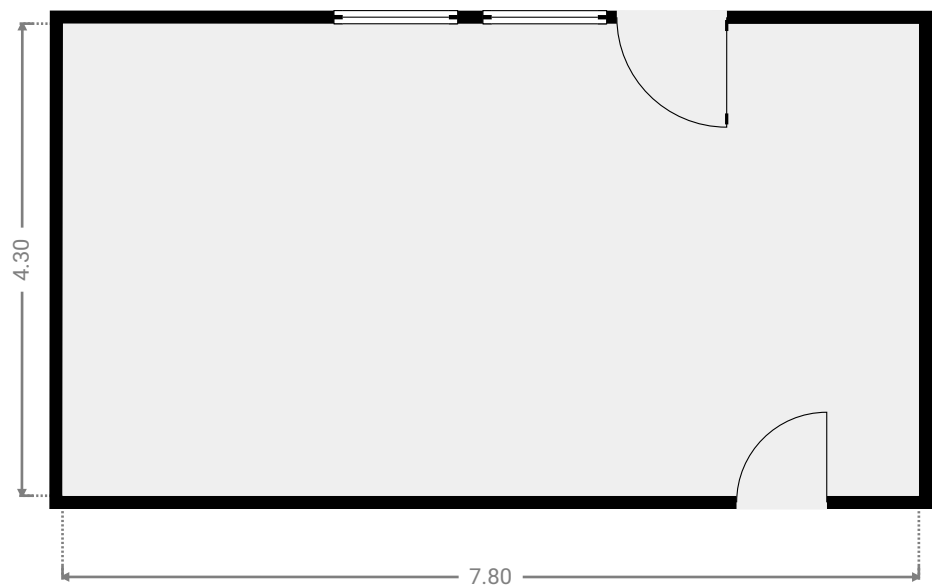
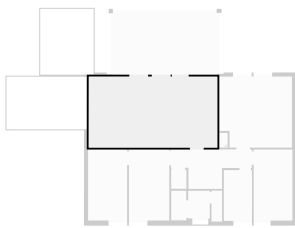
▼ Wintergarten (unbeheizt)
Erdgeschoss

BREITE: 6.35 m • LÄNGE: 3.75 m
BEREICH: 23.81 m² • UMFANG: 20.20 m

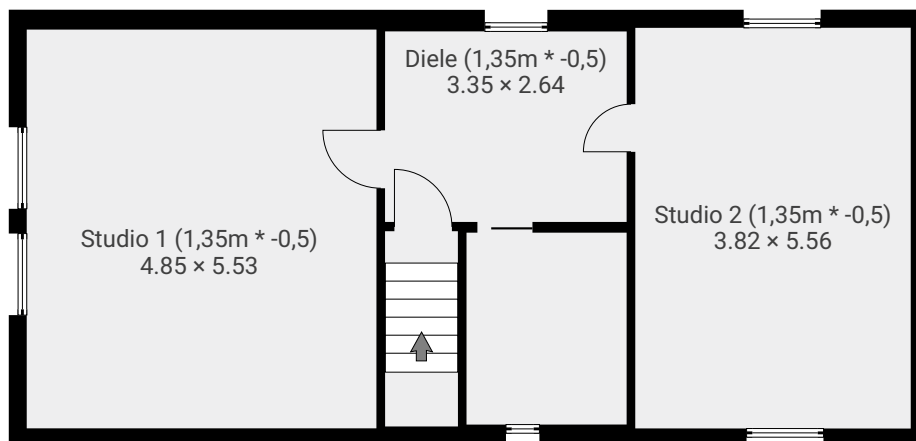


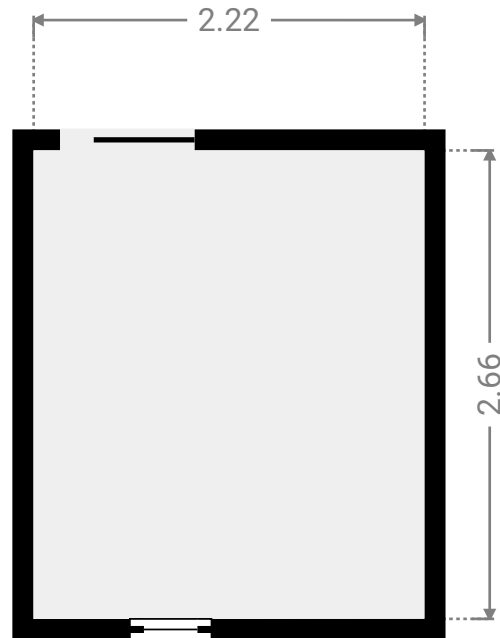
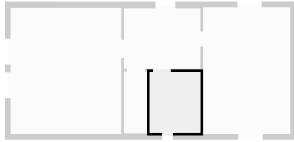
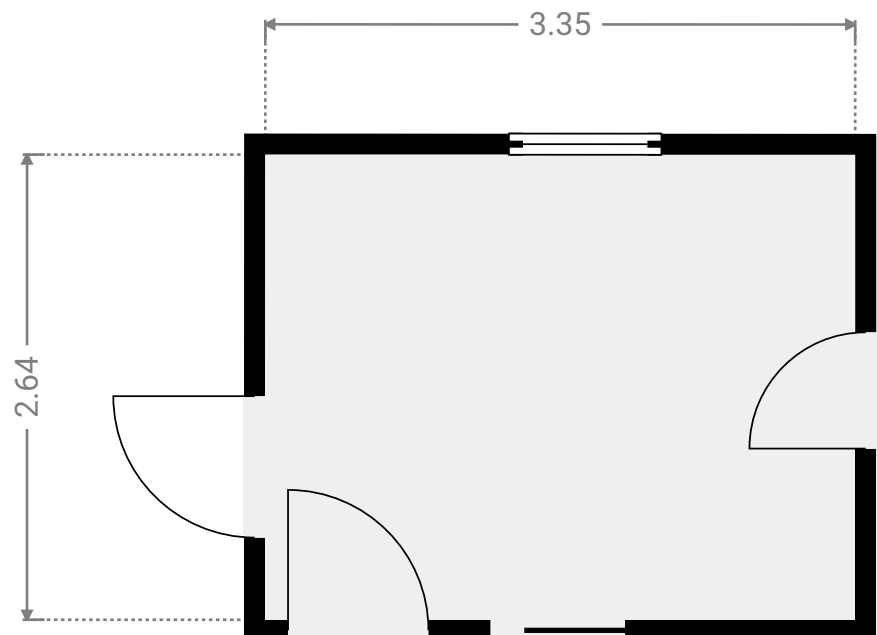
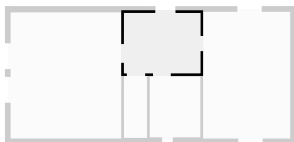
▼ Wohnzimmer
Erdgeschoss

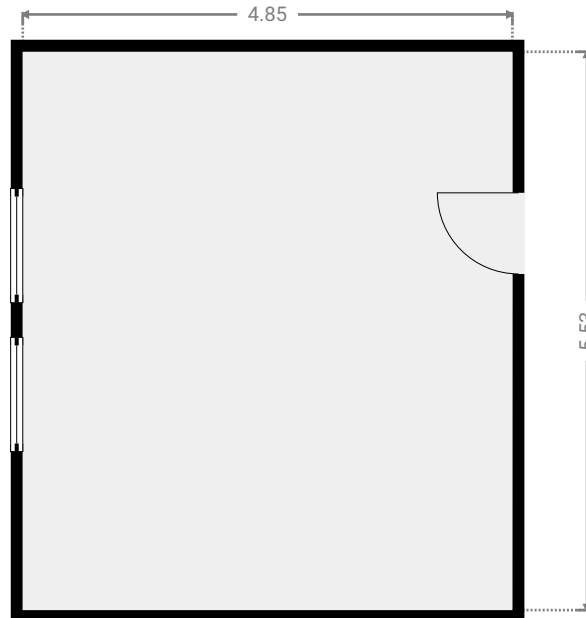
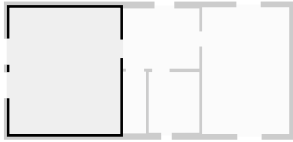
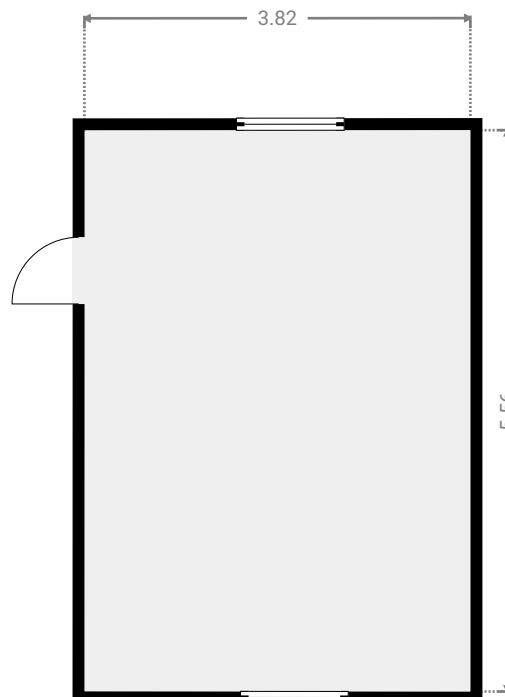
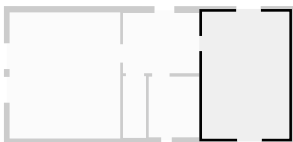
BREITE: 7.80 m • LÄNGE: 4.30 m
BEREICH: 33.56 m² • UMFANG: 24.21 m

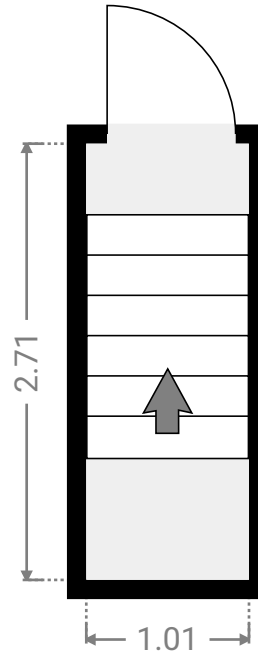
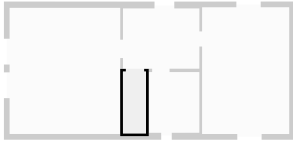


▼ Dach

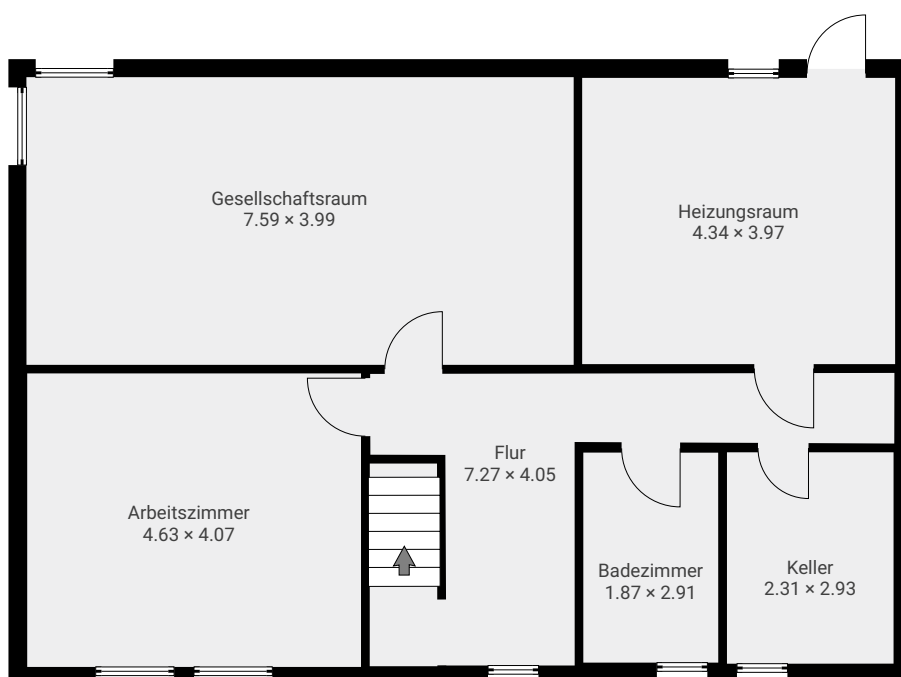


▼ **Badezimmer (1,2m * -0,5)**
DachBREITE: 2.22 m · LÄNGE: 2.66 m
BEREICH: 5.91 m² · UMFANG: 9.76 m▼ **Diele (1,35m * -0,5)**
DachBREITE: 3.35 m · LÄNGE: 2.64 m
BEREICH: 8.85 m² · UMFANG: 11.98 m

▼ **Studio 1 (1,35m * -0,5)**
DachBREITE: 4.85 m • LÄNGE: 5.53 m
BEREICH: 26.82 m² • UMFANG: 20.76 m▼ **Studio 2 (1,35m * -0,5)**
DachBREITE: 3.82 m • LÄNGE: 5.56 m
BEREICH: 21.23 m² • UMFANG: 18.76 m

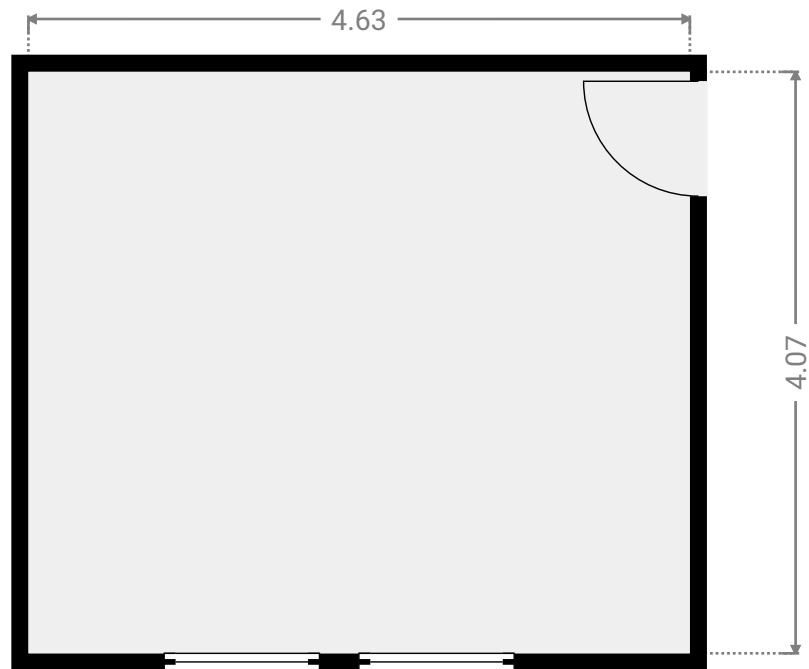
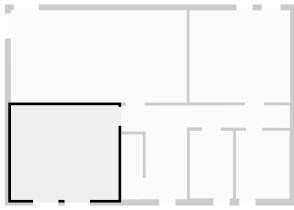
▼ Treppenhaus
DachBREITE: 1.01 m · LÄNGE: 2.71 m
BEREICH: 2.73 m² · UMFANG: 7.44 m

▼ 1. Untergeschoss



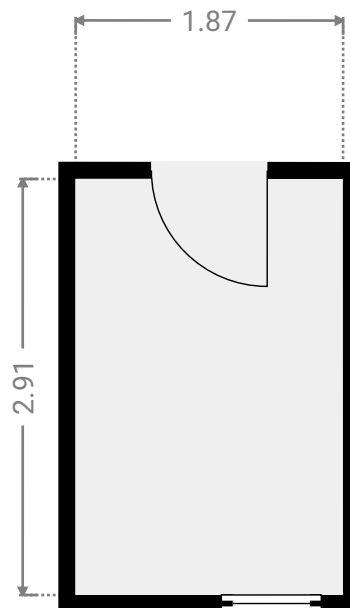
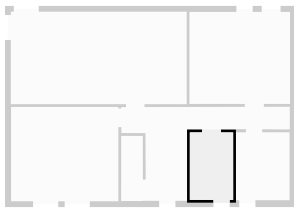
▼ **Arbeitszimmer**
1. Untergeschoss

BREITE: 4.63 m • LÄNGE: 4.07 m
BEREICH: 18.84 m² • UMFANG: 17.40 m



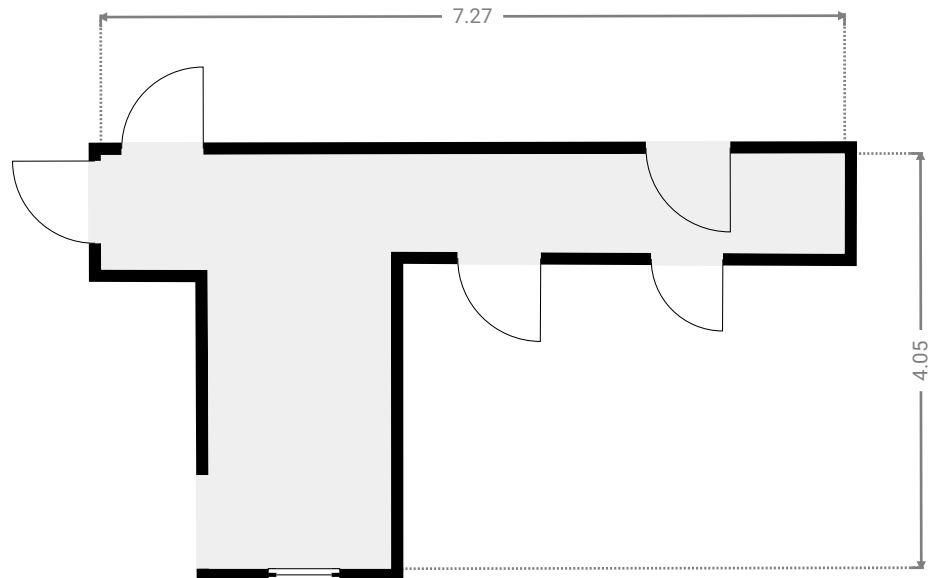
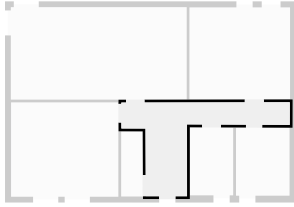
▼ **Badezimmer**
1. Untergeschoss

BREITE: 1.87 m • LÄNGE: 2.91 m
BEREICH: 5.44 m² • UMFANG: 9.56 m



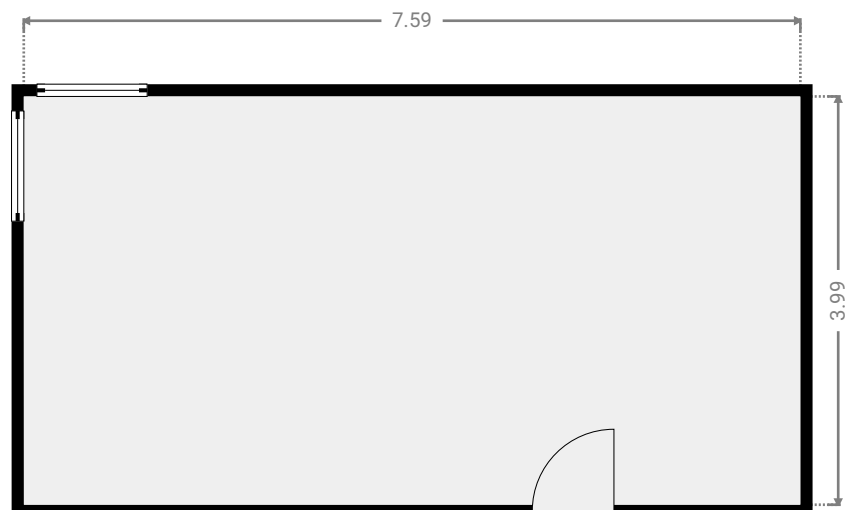
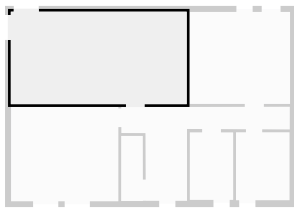
▼ **Flur**
1. Untergeschoss

BREITE: 7.27 m • LÄNGE: 4.05 m
BEREICH: 12.68 m² • UMFANG: 22.64 m



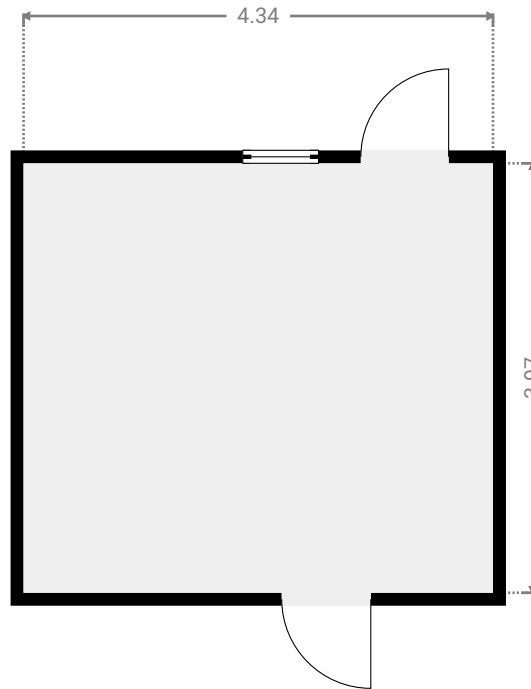
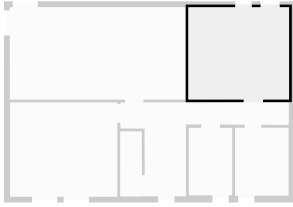
▼ **Gesellschaftsraum**
1. Untergeschoss

BREITE: 7.59 m • LÄNGE: 3.99 m
BEREICH: 30.28 m² • UMFANG: 23.16 m



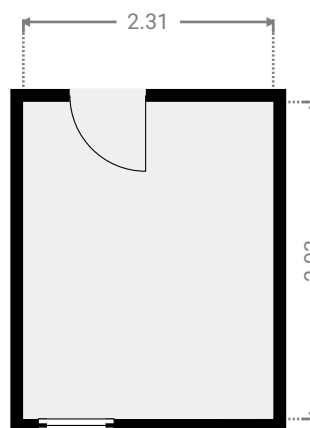
▼ **Heizungsraum**
1. Untergeschoss

BREITE: 4.34 m • LÄNGE: 3.97 m
BEREICH: 17.23 m² • UMFANG: 16.62 m



▼ **Keller**
1. Untergeschoss

BREITE: 2.31 m • LÄNGE: 2.93 m
BEREICH: 6.77 m² • UMFANG: 10.48 m



▼ Treppenhaus
1. UntergeschossBREITE: 0.94 m · LÄNGE: 2.81 m
BEREICH: 2.63 m² · UMFANG: 7.49 m