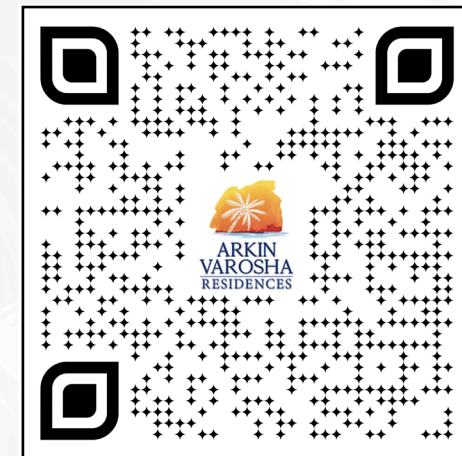


Welcome  
*to your new life*



ARKIN  
VAROSHA  
RESIDENCES

Follow  
*us*





## Welcome to Arkin Varosha Residences

---

You will witness the re-awakening of history in the Arkin Varosha Residences project, finding life with the Arkin Group signature and inspired by the fame of Varosha and its legendary luxury lifestyle.

We have brought together a contemporary, unique, and privileged beach and city life, as well as 5-star comfort for you.

---



### Arkin Group Assurance and Experience

---

As Arkin Group, we took the leap into the hotel industry with The Arkin Colony Hotel, our first hotel in Cyprus. After The Arkin Colony Hotel, which added value to Kyrenia with an unprecedented quality and vision on the island, we continued to contribute to island tourism by bringing our second hotel to the sector with The Arkin Palm Beach Hotel in Famagusta.

Thanks to our successful growth graphic led by our company founder Erbil Arkin, as well as hotel management, we started to serve in the sectors of education, gambling, tourism, and yachting.

With our 25 years of experience, we continued our activities in tourism and other sectors with our successful business ventures in Europe, South America, and the Middle East. The Arkin Creative Arts and Design University, Arkin Vision, Imagine, Arkin Messe Touristic, Hershams Golf Club and Arkin Pruva all serve under the roof of the Arkin Group.

---







## **The History of Varosha** —————

### *The legendary city of the past...*

Located in the Famagusta district of the Turkish Republic of Northern Cyprus, Varosha was one of the most famous and luxurious holiday destinations in the world before 1974, with its modern architecture, unique coastline and 10 thousand bed capacity. Varosha was host to the first hotel designed above 5 stars, as well as around 3 thousand commercial workplaces, 99 entertainment centres, 25 museums, 24 cinemas and theatres, 21 banks and 2 sports facilities. Even when the product and service quality it offered in the 1970s is compared to today's circumstances, Varosha was in a position to compete with many countries and had the feature of being the centre of attraction of the Middle East and the Eastern Mediterranean in terms of both tourism and architecture. Being among the first choices of famous names for summer holidays, Varosha hosted celebrities such as Elizabeth Taylor, Richard Burton, Paul Newman, Raquel Welch, Sophia Loren, and Brigitte Bardot. Back in the day, Varosha, the legendary city of the past, gave its guests a taste of the future.



**ARKIN  
VAROSHA  
RESIDENCES**



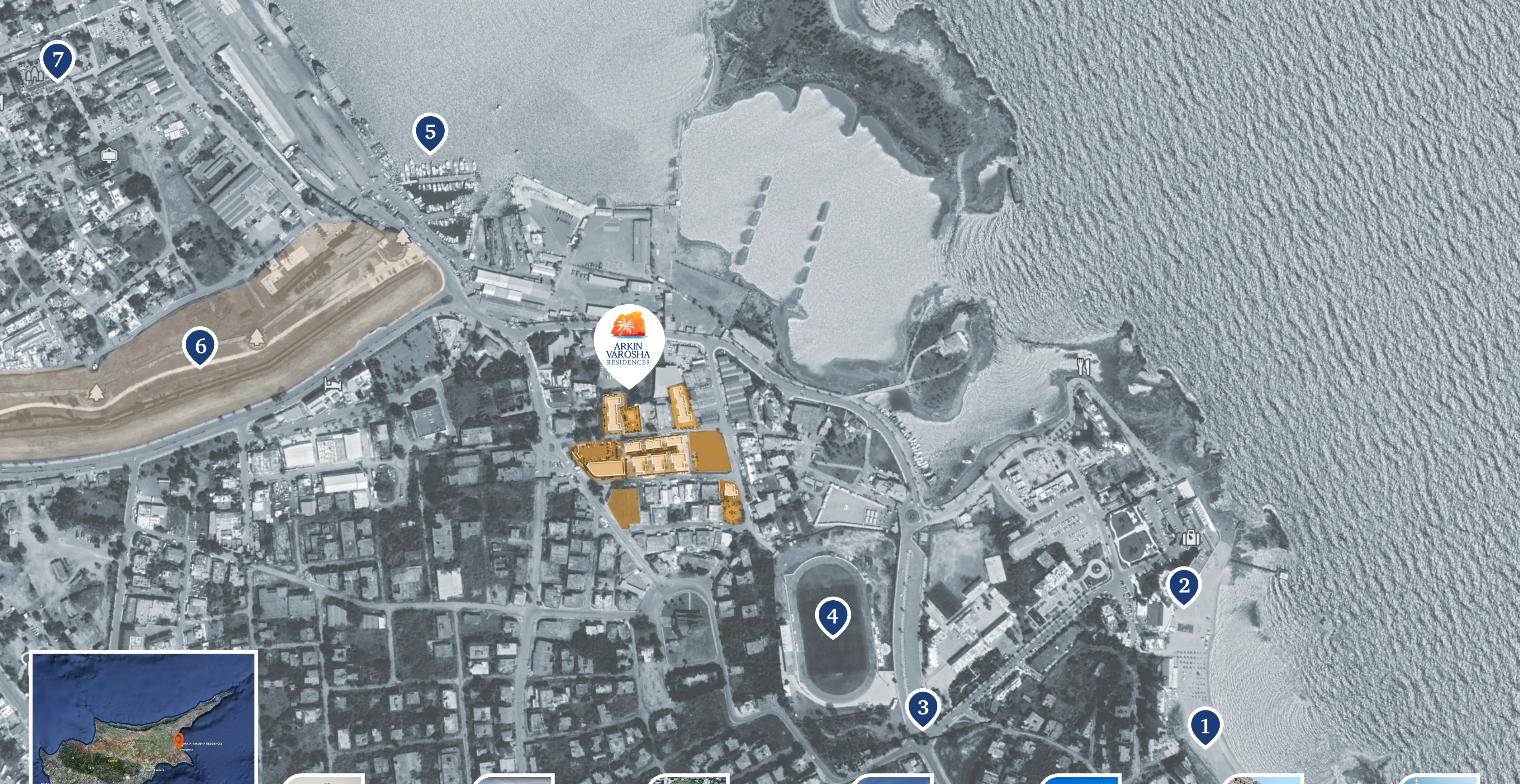


With the Arkin Varosha Residences, we offer you modern city life intertwined with history. In our project, set in a unique location within walking distance to the sea and the ancient Famagusta Port, we took care to preserve the historical texture of Varosha while reflecting today's contemporary architecture. The Arkin Varosha Residences, have an excellent panoramic view of the Mediterranean and the famous city of Varosha, which will impress both you and your guests. In the Arkin Varosha Residences project, where simplicity, functionality and aesthetics are prioritized, we have brought together the most stylish designs of Scandinavian style interior decoration to create an environment of tranquillity for you.

In the Arkin Varosha Residences project, by means of its 5-star life concept you will have the opportunity to live every season as if on holiday; you will not only have acquired an apartment but also the privileged services offered to you. Within the residence service, Clubhouse presents you with a colourful world, bringing a convivial social life to your home by virtue of its cafe, outdoor swimming pool and snack bar, spa and gym, sauna-steam room, party-meeting room, scooter / buggy rental service, and mini market.

The Arkin Varosha Residences has an unmatched location 2 minutes from the Dr Fazıl Küçük Stadium, 5 minutes from the Arkin Palm Beach Hotel, and 15 minutes walking distance to the historical Famagusta Port and city centre.





Varosha



Arkin Palm Beach Hotel



Varosha Entrance



Dr. Fazıl Küçük Stadium



Marina



Walled City



St. Nicholas Cathedral

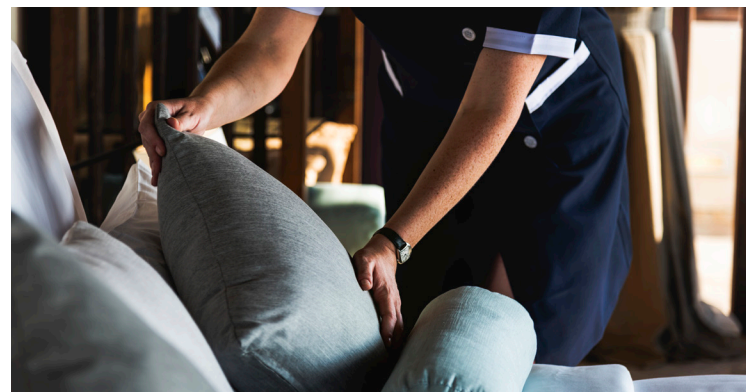


## Our services to make your life easier



**CLUBHOUSE CATERING SERVICE**

We are by your side with a cleaning service in line with your preliminary request so that you feel as if on holiday in your home. We will be happy to answer all of your or your tenants' cleaning needs with our professional teams.



**CLEANING SERVICE**

We are by your side with a cleaning service in line with your preliminary request so that you feel as if on holiday in your home. We will be happy to answer all of your or your tenants' cleaning needs with our professional teams.



**DOOR TO DOOR SERVICE**

All you need to do is ask, we will bring it to your door. If you do not feel like going out for your daily newspaper or minor shopping needs, we deliver them to you with our "Door to Door Service".



**LAUNDRY SERVICE**

You do not need to worry about laundry at the Arkin Varosha Residences. We take your laundry from your door, wash, and iron it, as well as deliver it to your home in special packaging.



**AIRPORT TRANSFER**

You no longer need to worry about leaving your car at the airport during your overseas travels. We will be at your service with our comfortable vehicles and experienced staff.



**CHILDREN'S PLAYGROUND**

In the playground designed with the comfort and safety of our little residents in mind, they will be happy, and you will be at ease.



**GARDEN AREAS**

You will find serenity in our garden areas where you will be intertwined with every shade of green.



**CONCIERGE SERVICE**

With our concierge staff, we provide you with a wide range of services, from flight, movie or concert tickets, restaurant reservations, car rental to taxi calls. We are with you whenever you need it.



**BASKETBALL COURT**

You will be able to enjoy basketball anytime you want with your family and loved ones.



**24/7 SECURITY**

If you are safe, we are at ease. With the audio and video inter-com system located at the entrance of each block, we make entering the building in a controlled manner, as well as monitor and record all the open and common areas around the complex with CCTV security cameras 24/7.

will be available to hosts with an additional cost.

will be available to hosts without any additional cost.



## Clubhouse Services

will be available to hosts **with an additional cost.**

will be available to hosts **without any additional cost.**



## VAROSHA Card

With the Varosha Card, exclusive to residents, you can safely enter the building as well as have many conveniences. You can purchase products or services at all Clubhouse venues with the cash you load onto the card; You can also use the Varosha Card when making payments for your water, internet, and private TV system.



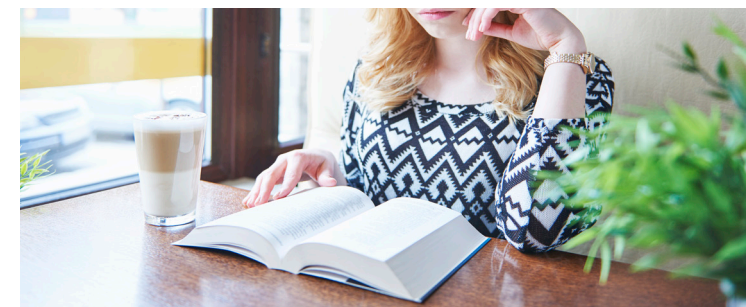
### MASSAGE SERVICE

With Clubhouse Spa you can invest more time to relieve and refresh for a healthier life.



### PARTY - MEETING ROOM

Our Party - Meeting Room, which has spacious area and an elite decoration, hosts your birthday parties, special celebrations, or business meetings; we meticulously fulfil details such as table layout, technical equipment, food, and beverage offerings in line with your requests.



### CAFE

The Clubhouse Cafe, which you can choose for your short breaks during the day, will become the blissful corner of the Arkin Varosha Residences. You will have a pleasant time in the Clubhouse Cafe, which will warm your heart with its cosy ambiance.



### MINI MARKET

With the Mini Market, we will be very close to you for your basic grocery needs.



### BUGGY - SCOOTER

To relish the fresh air, you will enjoy renting a buggy or scooter and taking a short stroll through the residence.



### GYM

In order to relieve your tiredness and freshen up, you will be able to spare more time for sports and healthy life with the Clubhouse Gym. We are at your service with the most modern sports equipment and an expert sports instructor.



### SWIMMING POOL

While you feel the positive energy of the sun and cool off in the swimming pool, we will be delighted to host you and your loved ones with our delicious snacks and special cocktails.



### SAUNA

Renew yourself with the sauna and steam room, which are just one of the privileges provided by the Clubhouse



## Site Plan



## Project details

The project, which consists of **9 blocks**, includes **160 flats** in total, with alternatives of **penthouse, 3 + 1** and **2 + 1**.

Arkin Varosha Residences, which is the only multi-storey project in the region, will be able to see the deep blue sea and the unique Maraş view in the world from all our windows.

**A** Block

**B** Block

**C** Block

**D** Block

**E** Block

 Clubhouse

 Future Projects

**P** Guest Parking







## Site Plan

A new life in an  
*Epic city...*

**A** Block

**C** Block

**B** Block

**D** Block

**E** Block





Block A



ARKIN  
VAROSHA  
RESIDENCES

The company reserves the right to make technical changes when it deems necessary. Images prepared for promotion may differ from the original.



3+1 Living Room



The company reserves the right to make technical changes when it deems necessary. Images prepared for promotion may differ from the original.



BLOCK A1/A2/A3  
TYPE-9  
100.0m<sup>2</sup>

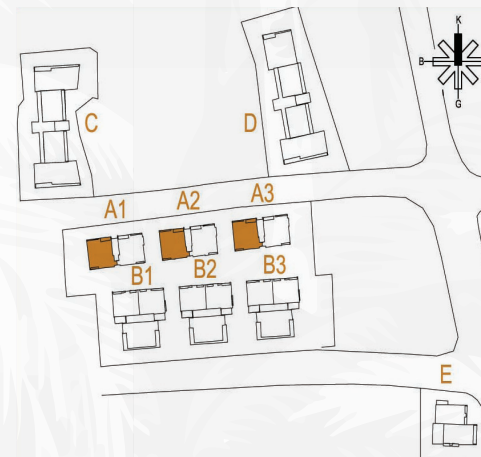
2+1



- 1 - Entrance :6.25 m<sup>2</sup>
- 2 - Kitchen :5.85 m<sup>2</sup>
- 3 - Balcony :11.35 m<sup>2</sup>
- 4 - Living Room :23.72 m<sup>2</sup>
- 5 - Corridor :3.0 m<sup>2</sup>
- 6 - Bathroom :4.40 m<sup>2</sup>
- 7 - Bedroom :12.0 m<sup>2</sup>
- 8 - Balcony :1.50 m<sup>2</sup>
- 9 - Corridor :13.45 m<sup>2</sup>
- 10 - Balcony :2.10 m<sup>2</sup>
- 11 - Bathroom :4.10 m<sup>2</sup>

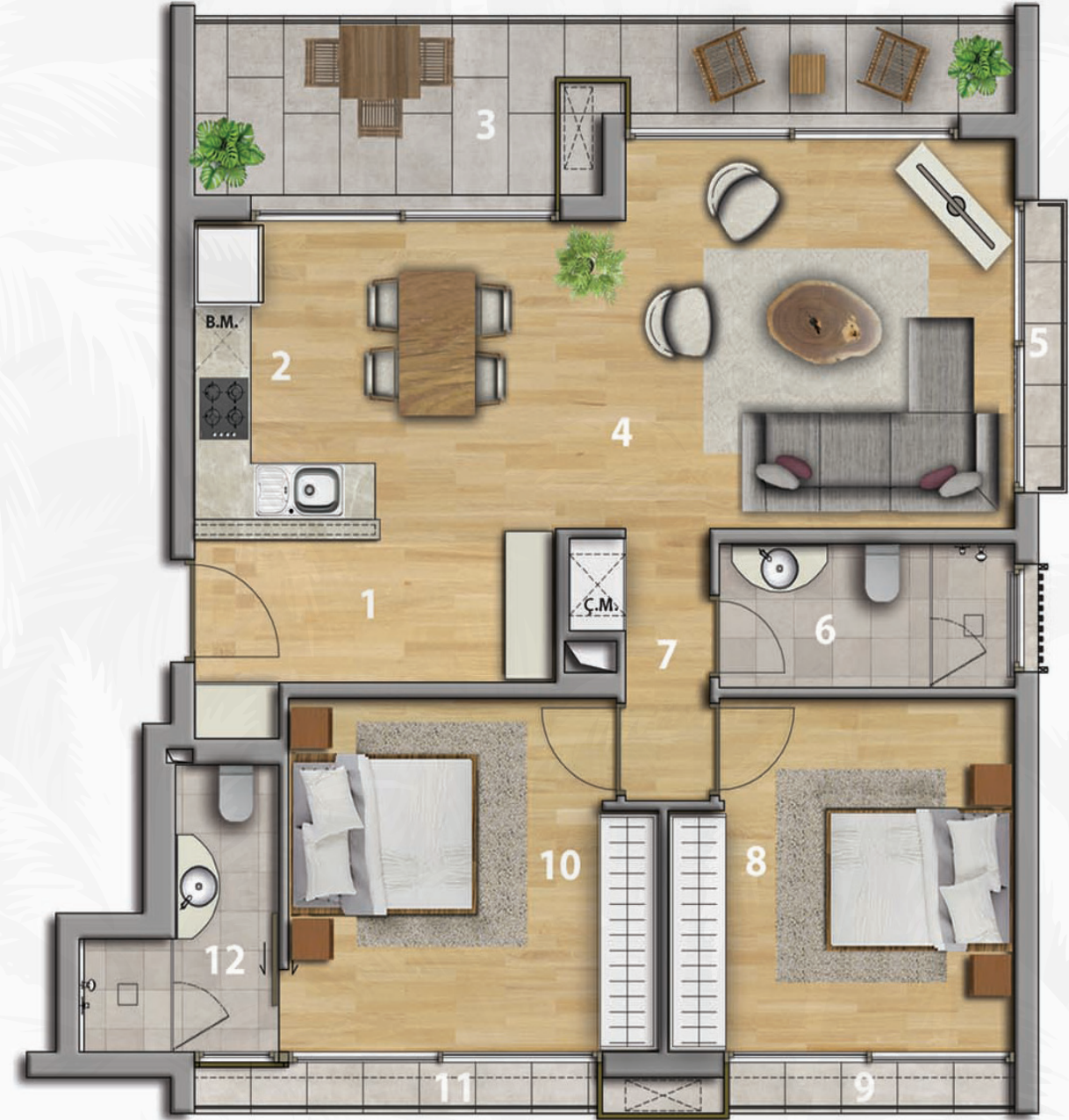
A1-01 | A1-03 | A1-05 | A1-07 | A1-09 | A1-11 | A1-13  
A2-01 | A2-03 | A2-05 | A2-07 | A2-09 | A2-11 | A2-13  
A3-01 | A3-03 | A3-05 | A3-07 | A3-09 | A3-11 | A3-13

TYPE FLOORS (Between 1<sup>st</sup> / 7<sup>th</sup> FLOORS)



BLOCK A1/A2/A3  
TYPE-9a  
100.85m<sup>2</sup>

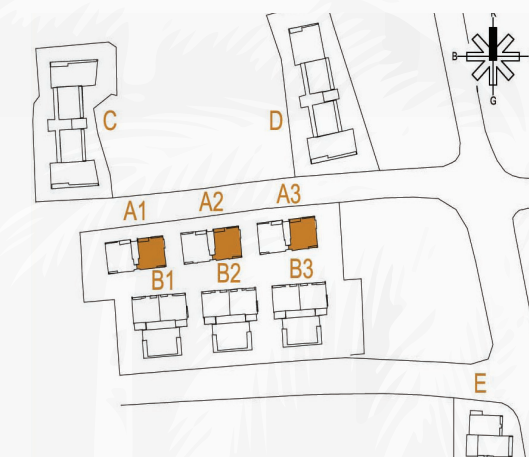
2+1



- 1 - Entrance :6.25 m<sup>2</sup>
- 2 - Kitchen :5.85 m<sup>2</sup>
- 3 - Balcony :11.35 m<sup>2</sup>
- 4 - Living Room :23.72 m<sup>2</sup>
- 5 - Balcony :1.30 m<sup>2</sup>
- 6 - Bathroom :4.10 m<sup>2</sup>
- 7 - Corridor :3.0 m<sup>2</sup>
- 8 - Bedroom :12.00 m<sup>2</sup>
- 9 - Balcony :1.50 m<sup>2</sup>
- 10 - Bedroom :13.45 m<sup>2</sup>
- 11 - Balcony :2.10 m<sup>2</sup> / 12 - Bathroom 4.10m<sup>2</sup>

A1-02 | A1-04 | A1-06 | A1-08 | A1-10 | A1-12 | A1-14  
A2-02 | A2-04 | A2-06 | A2-08 | A2-10 | A2-12 | A2-14  
A3-02 | A3-04 | A3-06 | A3-08 | A3-10 | A3-12 | A3-14

TYPE FLOORS (Between 1<sup>st</sup> / 7<sup>th</sup> FLOORS)





2+1 Kitchen



The company reserves the right to make technical changes when it deems necessary. Images prepared for promotion may differ from the original.



Block B



The company reserves the right to make technical changes when it deems necessary. Images prepared for promotion may differ from the original.



B1/B2/B3 BLOCK  
TYPE-10  
90.0m<sup>2</sup>

2+1



- 1 - Entrance :2.65 m<sup>2</sup>
- 2 - Kitchen :13.13 m<sup>2</sup>
- 3 - Living Room :20.45 m<sup>2</sup>
- 4 - Balcony :8.80 m<sup>2</sup>
- 5 - Bedroom :10.73 m<sup>2</sup>
- 6 - Balcony :2.30 m<sup>2</sup>
- 7 - Bathroom :3.42 m<sup>2</sup>
- 8 - Corridor :1.70 m<sup>2</sup>
- 9 - Balcony :1.23 m<sup>2</sup>
- 10 - Bedroom :11.0 m<sup>2</sup>
- 11 - Bathroom :3.65 m<sup>2</sup>

B1-01 | B1-04 | B1-07 | B1-10 | B1-13 | B1-16  
B2-01 | B2-04 | B2-07 | B2-10 | B2-13 | B2-16  
B3-01 | B3-04 | B3-07 | B3-10 | B3-13 | B3-16

TYPE FLOORS (Between 1<sup>st</sup> / 6<sup>th</sup> FLOORS)



B1/B2/B3 BLOCK  
TYPE-10a  
91.0m<sup>2</sup>

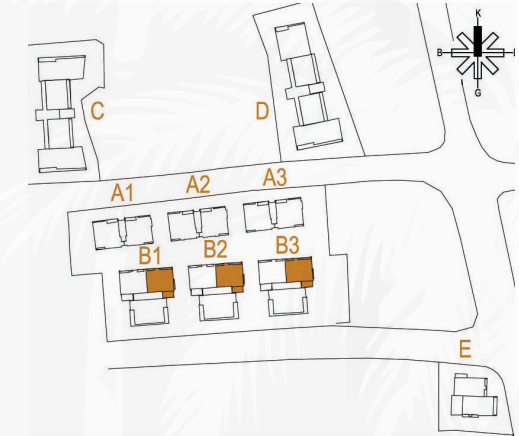
2+1



- 1 - Entrance :2.65 m<sup>2</sup>
- 2 - Kitchen :13.13 m<sup>2</sup>
- 3 - Living Room :20.45 m<sup>2</sup>
- 4 - Balcony :8.80 m<sup>2</sup>
- 5 - Balcony :1.55 m<sup>2</sup>
- 6 - Bedroom :10.73 m<sup>2</sup>
- 7 - Balcony :2.30 m<sup>2</sup>
- 8 - Corridor :1.70 m<sup>2</sup>
- 9 - Bathroom :3.42 m<sup>2</sup>
- 10 - Bedroom :11.0 m<sup>2</sup>
- 11 - Bathroom :3.65 m<sup>2</sup>

B1-02 | B1-05 | B1-08 | B1-11 | B1-14 | B1-17  
B2-02 | B2-05 | B2-08 | B2-11 | B2-14 | B2-17  
B3-02 | B3-05 | B3-08 | B3-11 | B3-14 | B3-17

TYPE FLOORS (Between 1<sup>st</sup> / 6<sup>th</sup> FLOORS)





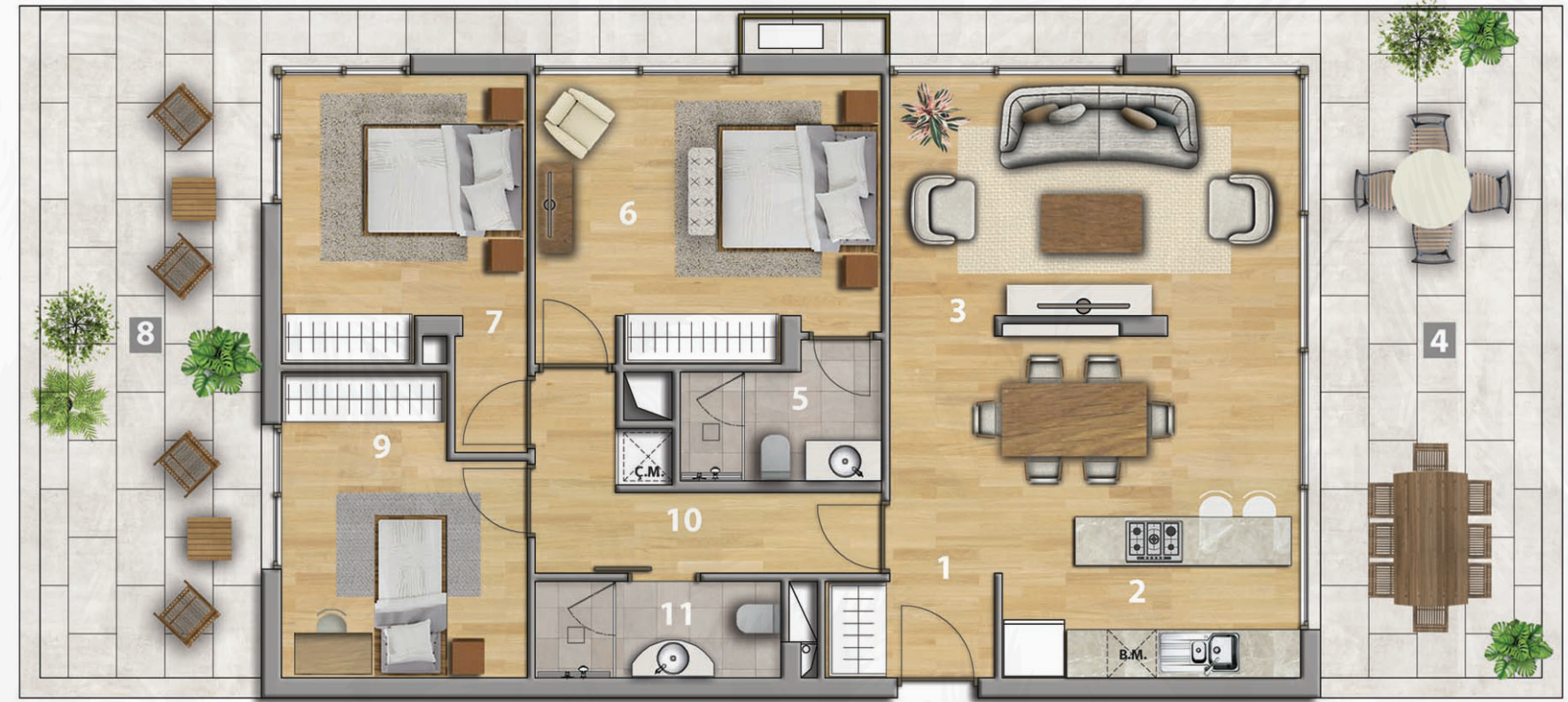
**B1/B2/B3 BLOCK**  
**TYPE-11**  
**123.52m<sup>2</sup>**

**3+1**



**B1/B2/B3 BLOCK**  
**TYPE-12**  
**163.0m<sup>2</sup>**

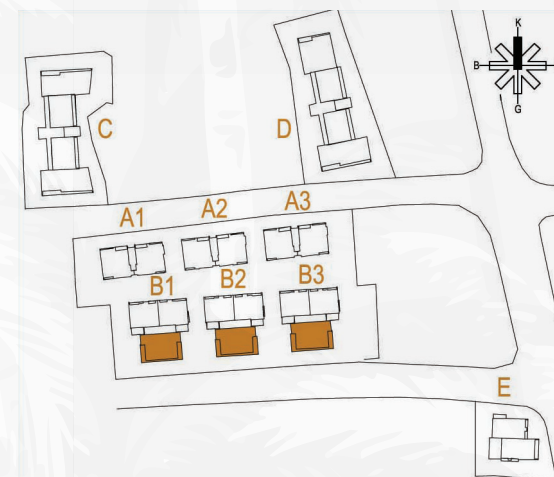
**3+1**



- 1 - Entrance :5.40 m<sup>2</sup>
- 2 - Kitchen + Dining Room :13.05 m<sup>2</sup>
- 3 - Living Room :18.11 m<sup>2</sup>
- 4 - Balcony :23.80 m<sup>2</sup>
- 5 - Bedroom :13.0 m<sup>2</sup>
- 6 - Bathroom :3.25 m<sup>2</sup>
- 7 - Bedroom :12.50 m<sup>2</sup>
- 8 - Bathroom :3.20 m<sup>2</sup>
- 9 - Bedroom :9.0 m<sup>2</sup>
- 10 - Bathroom :3.30 m<sup>2</sup>
- 11 - Corridor :5.40 m<sup>2</sup>

B1-03 | B1-06 | B1-09 | B1-12 | B1-15 | A1-18 | A1-20  
 B2-03 | B2-06 | B2-09 | B2-12 | B2-15 | A2-18 | A2-20  
 B3-03 | B3-06 | B3-09 | B3-12 | B3-15 | A3-18 | A3-20

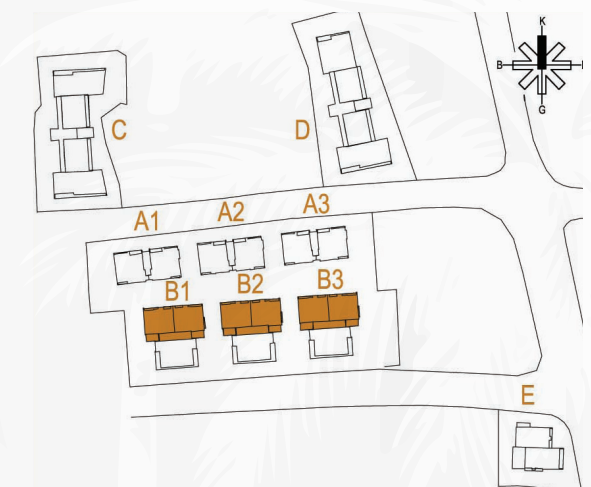
TYPE FLOORS & PENTHOUSE FLOOR (Between 1<sup>st</sup> / 7<sup>th</sup> FLOORS)



- 1 - Entrance :3.80 m<sup>2</sup>
- 2 - Kitchen :7.50 m<sup>2</sup>
- 3 - Living Room + Dining Room :27.50 m<sup>2</sup>
- 4 - Terrace :26.20 m<sup>2</sup>
- 5 - Bathroom :3.77 m<sup>2</sup>
- 6 - Bedroom :15.00 m<sup>2</sup>
- 7 - Bedroom :12.00 m<sup>2</sup>
- 8 - Terrace :26.40 m<sup>2</sup>
- 9 - Bedroom :10.50 m<sup>2</sup>
- 10 - Corridor :6.35 m<sup>2</sup>
- 11 - Bathroom :3.66 m<sup>2</sup>

B3-19 | B2-10 | B3-19

PENTHOUSE FLOOR (7<sup>th</sup> FLOOR)





2+1 Bedroom



The company reserves the right to make technical changes when it deems necessary. Images prepared for promotion may differ from the original.



2+1  
Living Room



The company reserves the right to make technical changes when it deems necessary. Images prepared for promotion may differ from the original.



Block C

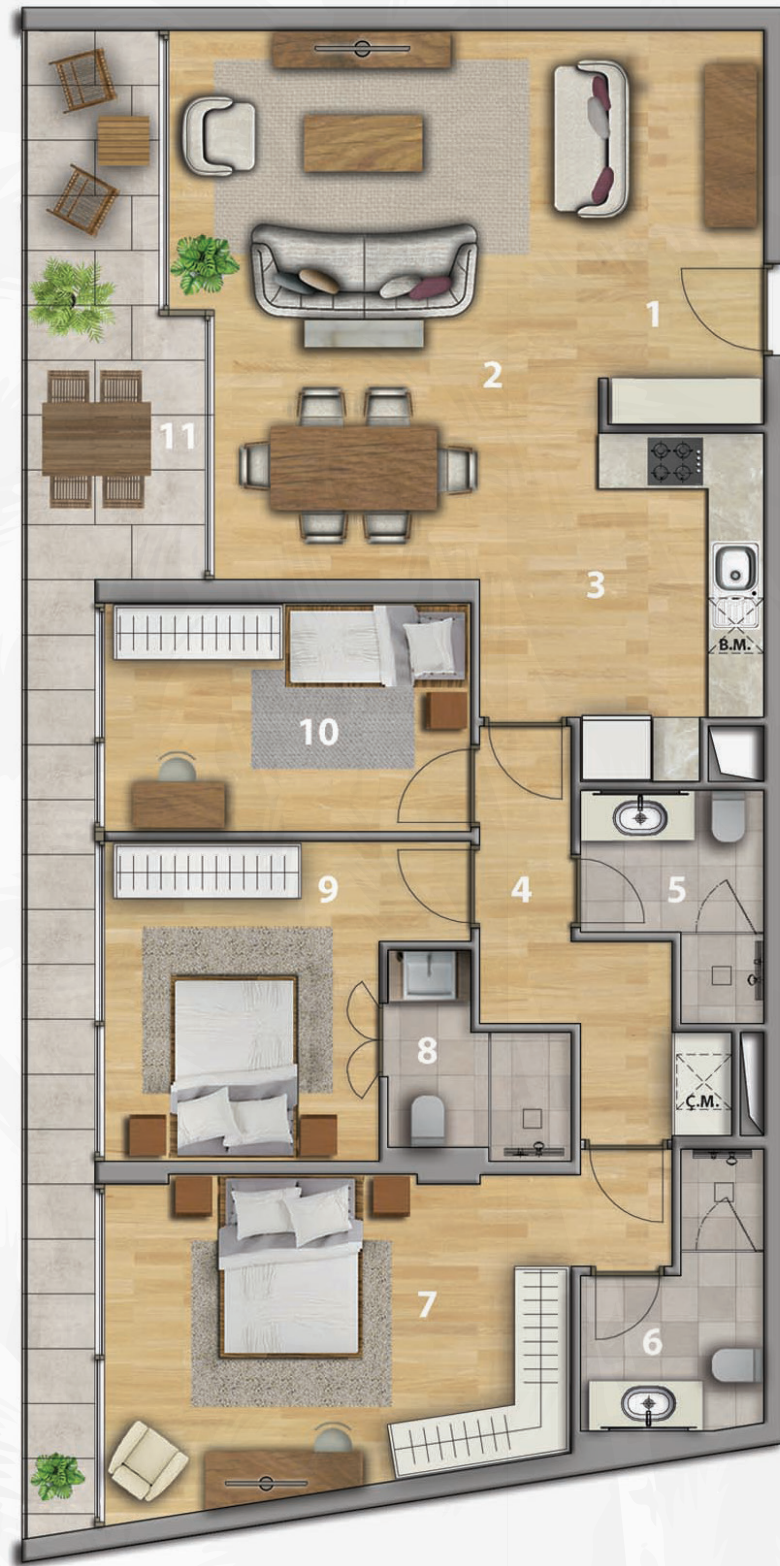


The company reserves the right to make technical changes when it deems necessary. Images prepared for promotion may differ from the original.



**BLOCK C  
TYPE-3  
134.45m<sup>2</sup>**

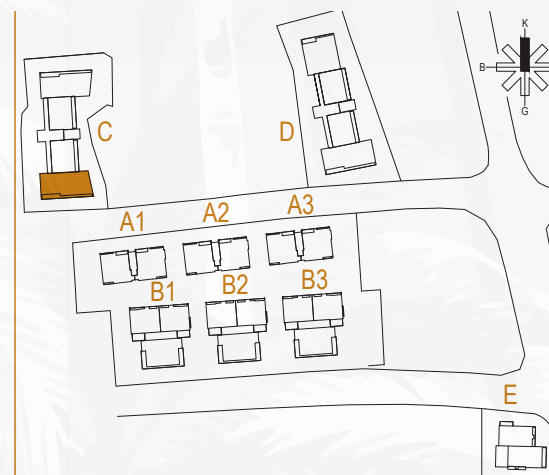
**3+1**



- 1 - Entrance :3.20 m<sup>2</sup>
- 2 - Living Room + Dining Room :31.20 m<sup>2</sup>
- 3 - Kitchen :8.45m<sup>2</sup>
- 4 - Corridor :6.20 m<sup>2</sup>
- 5 - Bathroom :4.00 m<sup>2</sup>
- 6 - Bathroom :4.80 m<sup>2</sup>
- 7 - Bedroom :18.40 m<sup>2</sup>
- 8 - Bathroom :3.75 m<sup>2</sup>
- 9 - Bedroom :11.60 m<sup>2</sup>
- 10 - Bedroom :10.0 m<sup>2</sup>
- 11 - Balcony :18.75 m<sup>2</sup>

C-01 | C-05 | C-09 | C-13 | C-17

TYPE FLOORS ( BETWEEN 1<sup>st</sup> / 5<sup>th</sup> FLOORS)



**BLOCK C  
TYPE-3a  
134.45m<sup>2</sup>**

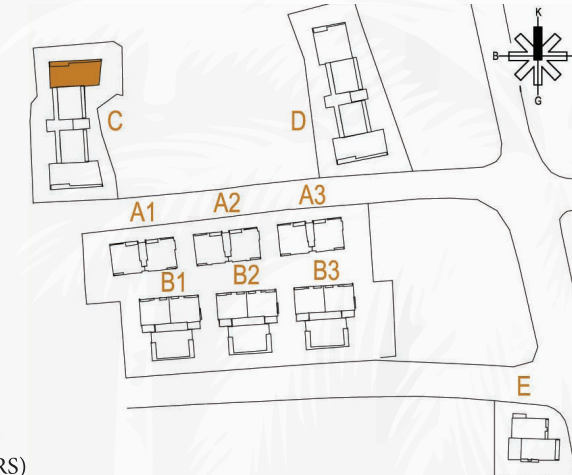
**3+1**



- 1 - Entrance :7.40 m<sup>2</sup>
- 2 - Living Room + Dining Room :26.72 m<sup>2</sup>
- 3 - Kitchen :8.45m<sup>2</sup>
- 4 - Corridor :6.20 m<sup>2</sup>
- 5 - Bathroom :4.00 m<sup>2</sup>
- 6 - Bathroom :4.80 m<sup>2</sup>
- 7 - Bedroom :18.40 m<sup>2</sup>
- 8 - Bathroom :3.75 m<sup>2</sup>
- 9 - Bedroom :11.60 m<sup>2</sup>
- 10 - Bedroom :10.0 m<sup>2</sup>
- 11 - Balcony :18.75 m<sup>2</sup>

C-04 | C-08 | C-12 | C-16 | C-20

TYPE FLOORS ( BETWEEN 1<sup>st</sup> / 5<sup>th</sup> FLOORS)





**3+1  
Bedroom**



The company reserves the right to make technical changes when it deems necessary. Images prepared for promotion may differ from the original.



# Bathroom



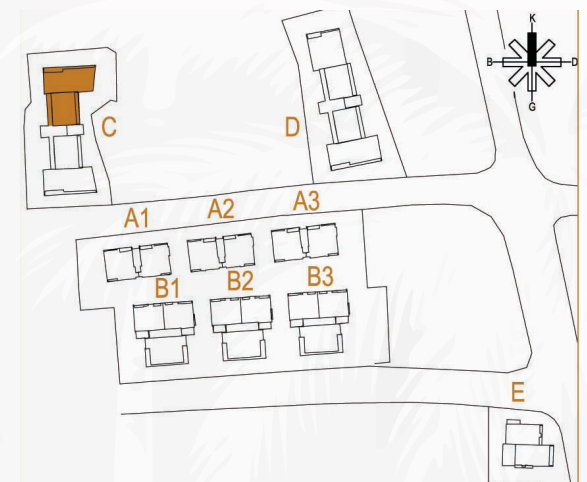
The company reserves the right to make technical changes when it deems necessary. Images prepared for promotion may differ from the original.

**BLOCK C**  
**TYPE-6**  
**230.0m<sup>2</sup>**

**3+1**



- 1 - Entrance :7.10 m<sup>2</sup>
- 2 - Living Room + Dining Room :22.05 m<sup>2</sup>
- 3 - Kitchen :24.10m<sup>2</sup>
- 4 - Terrace :20.0 m<sup>2</sup>
- 5 - Corridor :8.0 m<sup>2</sup>
- 6 - Bathroom :4.90 m<sup>2</sup>
- 7 - Bathroom :3.52 m<sup>2</sup>
- 8 - Bedroom :12.55 m<sup>2</sup>
- 9 - Bedroom :10.30 m<sup>2</sup>
- 10 - Terrace :70.0 m<sup>2</sup>
- 11 - Dressing Room :4.45 m<sup>2</sup>
- 12 - Bedroom :13.0 m<sup>2</sup>
- 13 - Bathroom :5.0 m<sup>2</sup>



C-22

PENTHOUSE FLOOR (6<sup>th</sup> FLOOR)



BLOCK C/D  
TYPE-4/4a  
95.60m<sup>2</sup>

2+1



- 1 - Entrance :5.63 m<sup>2</sup>
- 2 - Living Room:15.83 m<sup>2</sup>
- 3 - Kitchen + Dining Room :14.0m<sup>2</sup>
- 4 - Balcony :17.08 m<sup>2</sup>
- 5 - Bedroom :10.22 m<sup>2</sup>
- 6 - Bedroom :12.05 m<sup>2</sup>
- 7 - Bathroom :3.15 m<sup>2</sup>
- 8 - Hallway :4.34 m<sup>2</sup>
- 9 - Bathroom :5.0 m<sup>2</sup>

C-02 | C-03 | C-06 | C-07 | C-10 | C-11 | C-14 | C-15 | C-18 | C-19  
D-02 | D-03 | D-06 | D-07 | D-10 | D-11 | D-14 | D-15 | D-18 | D-19

TYPE FLOORS (BETWEEN 1<sup>st</sup> / 5<sup>th</sup> FLOORS)



BLOCK C/D  
TYPE-5/5a  
230.0m<sup>2</sup> / 232.05m<sup>2</sup>

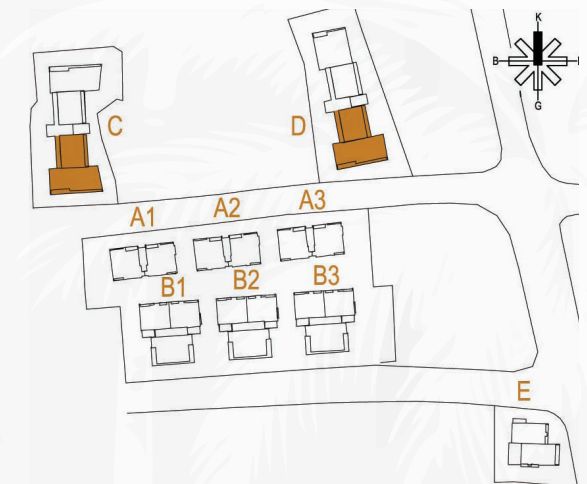
3+1



- 1 - Giriş Holü :7.35 m<sup>2</sup>
- 2 - Salon :24.75 m<sup>2</sup>
- 3 - Teras :21.0m<sup>2</sup>
- 4 - Mutfak + Yemek B. :29.20 m<sup>2</sup>
- 5 - Koridor :12.0 m<sup>2</sup>
- 6 - Banyo :4.50 m<sup>2</sup>
- 7 - Yatak Odası + Giyinme B. :18.40 m<sup>2</sup>
- 8 - Yatak Odası :11.20 m<sup>2</sup>
- 9 - Banyo :3.20 m<sup>2</sup>
- 10 - Banyo :3.15 m<sup>2</sup>
- 11 - Yatak Odası + Giyinme B. :18.9 m<sup>2</sup>
- 12 - Teras :51.77 m<sup>2</sup> / 53.82 m<sup>2</sup>

C-21 | D-21

PENTHOUSE FLOOR (6<sup>th</sup> FLOOR)





3+1 Penthouse



The company reserves the right to make technical changes when it deems necessary. Images prepared for promotion may differ from the original.



Block D



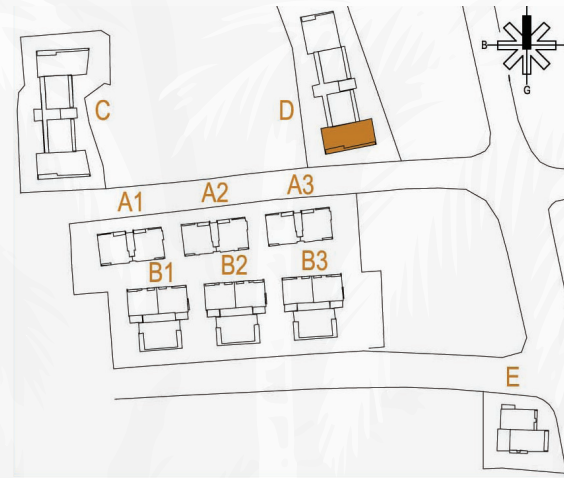
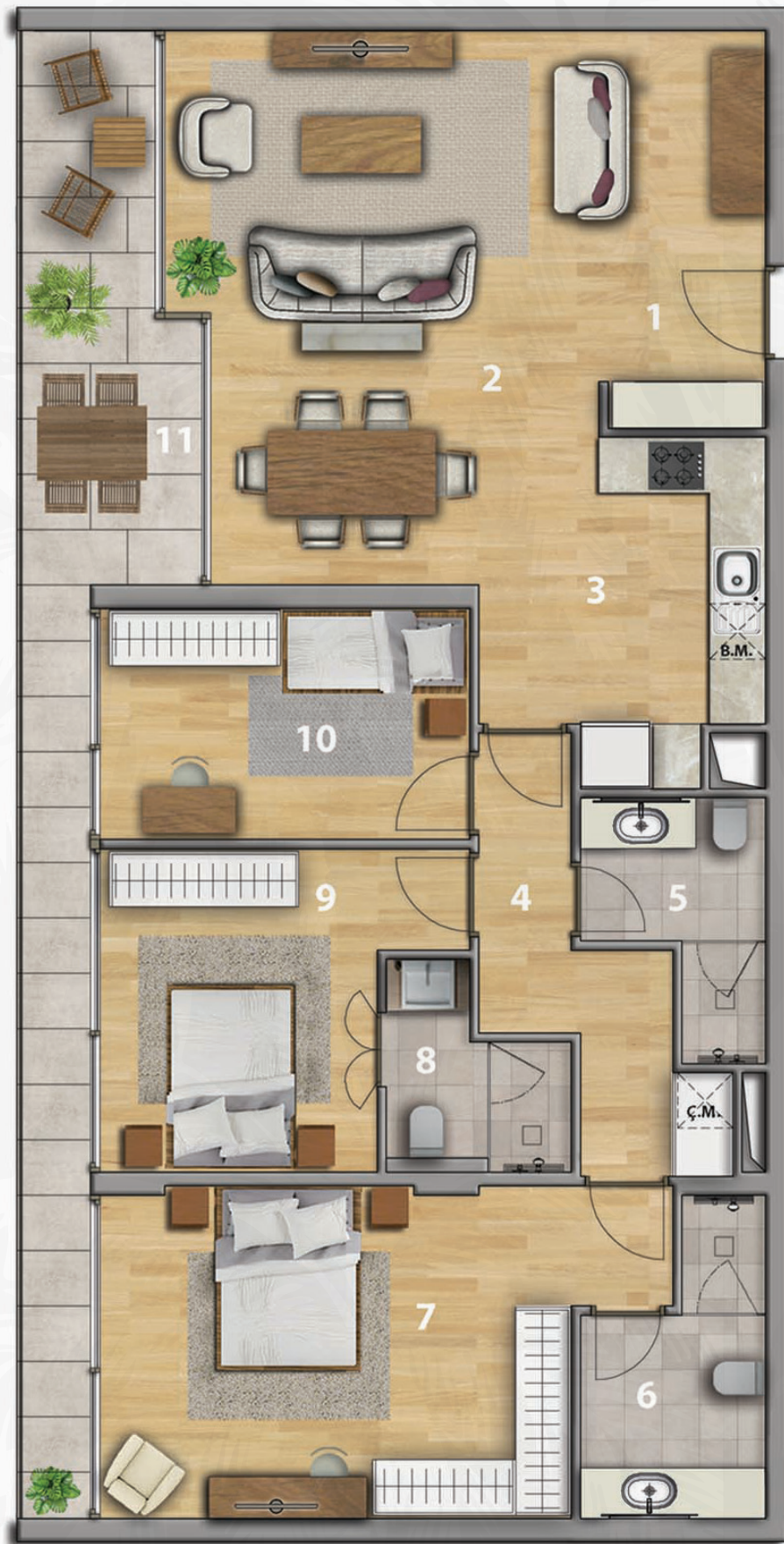
ARKIN  
VAROSHA  
RESIDENCES

The company reserves the right to make technical changes when it deems necessary. Images prepared for promotion may differ from the original.



**BLOCK D**  
**TYPE-3b**  
**136.70m<sup>2</sup>**

**3+1**



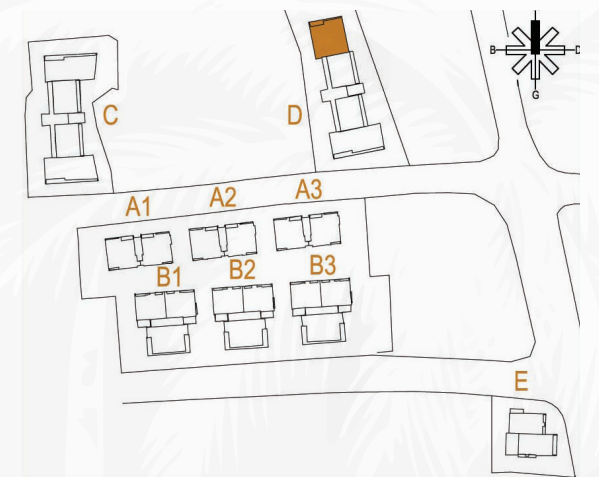
- 1 - Entrance :3.20 m<sup>2</sup>
- 2 - Living Room + Dining Room :31.20 m<sup>2</sup>
- 3 - Kitchen :8.45m<sup>2</sup>
- 4 - Corridor :6.50 m<sup>2</sup>
- 5 - Bathroom :4.30 m<sup>2</sup>
- 6 - Bathroom :5.55 m<sup>2</sup>
- 7 - Bedroom :19.65 m<sup>2</sup>
- 8 - Bathroom :3.75 m<sup>2</sup>
- 9 - Bedroom :11.60 m<sup>2</sup>
- 10 - Bedroom :10.0 m<sup>2</sup>
- 11 - Balcony :18.50 m<sup>2</sup>

D-01 | D-05 | D-09 | D-13 | D-17

TYPE FLOORS (BETWEEN 1<sup>st</sup> / 5<sup>th</sup> FLOORS)

**BLOCK D**  
**TYPE-7**  
**127.0m<sup>2</sup>**

**3+1**



- 1 - Entrance :5.12 m<sup>2</sup>
- 2 - Kitchen :6.77 m<sup>2</sup>
- 3 - Living Room + Dining Room :30.90m<sup>2</sup>
- 4 - Balcony :10.20 m<sup>2</sup>
- 5 - Bedroom :17.20 m<sup>2</sup>
- 6 - Bathroom :3.90 m<sup>2</sup>
- 7 - Bathroom :3.50 m<sup>2</sup>
- 8 - Bedroom :3.16 m<sup>2</sup>
- 9 - Balcony :3.16 m<sup>2</sup>
- 10 - Bedroom :10.55 m<sup>2</sup>
- 11 - Corridor :8.35 m<sup>2</sup>
- 12 - Bathroom :3.35 m<sup>2</sup>

D-04 | D-08 | D-12 | D-16 | D-20

TYPE FLOORS (BETWEEN 1<sup>st</sup> / 5<sup>th</sup> FLOORS)



Block D

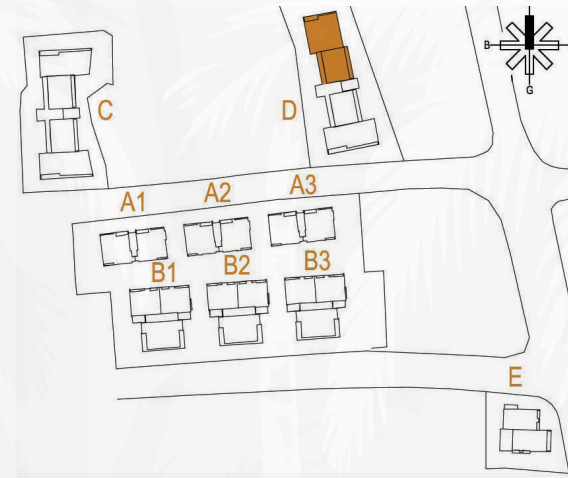
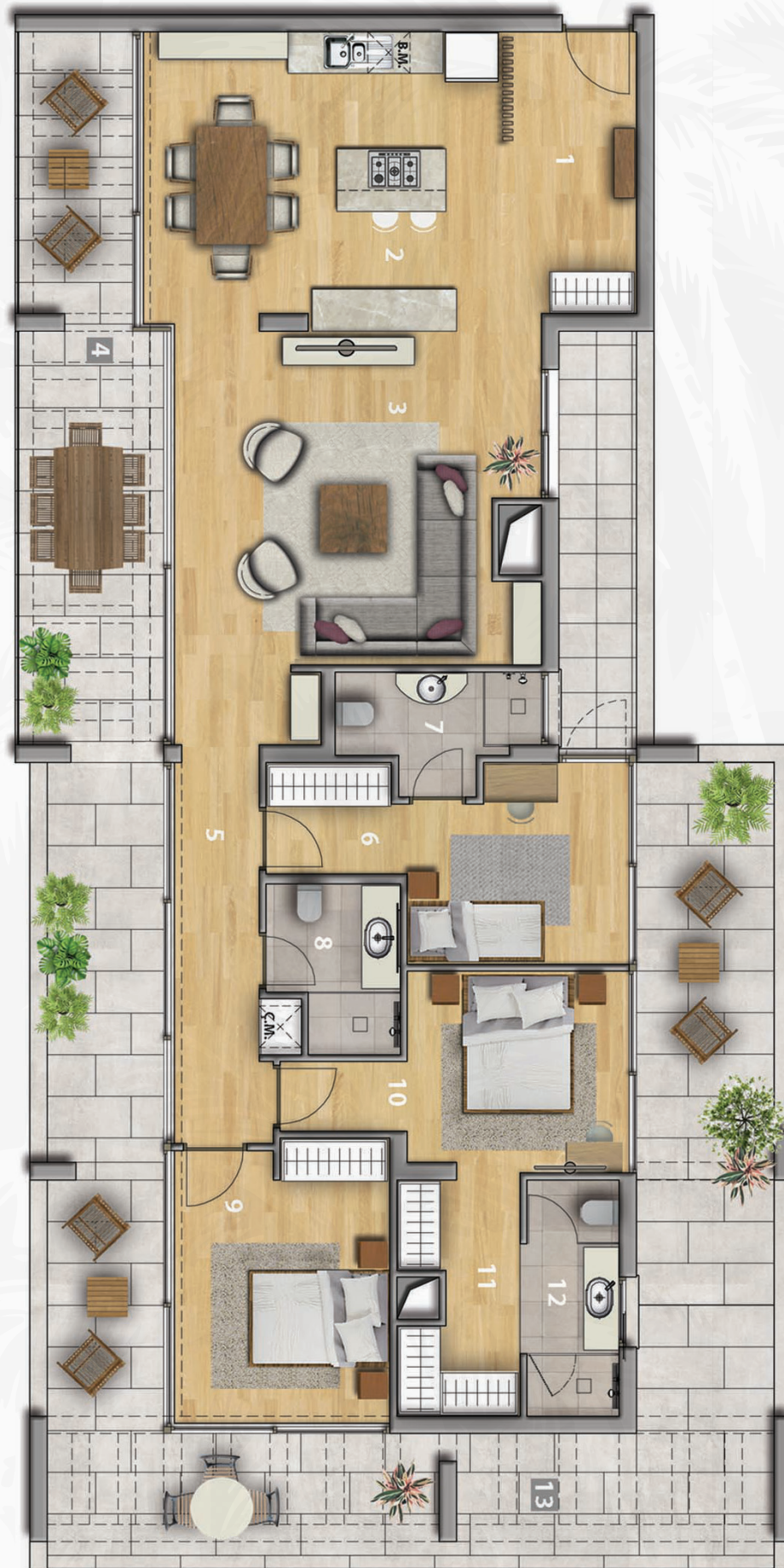


The company reserves the right to make technical changes when it deems necessary. Images prepared for promotion may differ from the original.



BLOCK D  
TYPE-8  
221.80m<sup>2</sup>

3+1



- 1 - Entrance :9.05 m<sup>2</sup>
- 2 - Kitchen + Dining Room :23.45 m<sup>2</sup>
- 3 - Living Room :25.60 m<sup>2</sup>
- 4 - Terrace :19.50 m<sup>2</sup>
- 5 - Corridor :7.55 m<sup>2</sup>
- 6 - Bedroom :11.40 m<sup>2</sup>
- 7 - Bathroom :3.45 m<sup>2</sup>
- 8 - Bathroom :4.10 m<sup>2</sup>
- 9 - Bedroom :12.20 m<sup>2</sup>
- 10 - Bedroom :10.70 m<sup>2</sup>
- 11 - Dressing Room :5.45 m<sup>2</sup>
- 12 - Bathroom :4.60 m<sup>2</sup>
- 13 - Terrace :55.20 m<sup>2</sup>

D-22

PENTHOUSE FLOOR (6<sup>th</sup> FLOOR)

3+1 Penthouse  
Bathroom



The company reserves the right to make technical changes when it deems necessary.  
Images prepared for promotion may differ from the original.



Block D  
Balcony



The company reserves the right to make technical changes when it deems necessary.  
Images prepared for promotion may differ from the original.



Block E



ARKIN  
VAROSHA  
RESIDENCES

The company reserves the right to make technical changes where it is necessary.  
Images prepared for presentation may differ from the original.



**BLOCK E  
TYPE-1  
83.60m<sup>2</sup>**

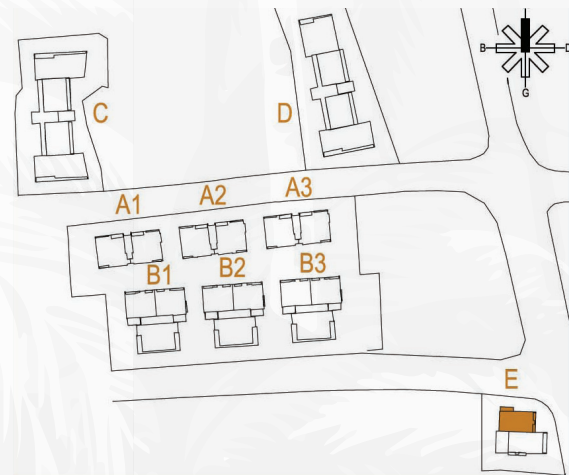
**2+1**



- 1 - Kitchen :5.63 m<sup>2</sup>
- 2 - Living Room + Dining Room :24.50 m<sup>2</sup>
- 3 -Balcony :5.90 m<sup>2</sup>
- 4 - Bathroom :4.10 m<sup>2</sup>
- 5 - Corridor :2.75 m<sup>2</sup>
- 6 - Bedroom :10.75 m<sup>2</sup>
- 7 - Bathroom :5.60 m<sup>2</sup>
- 8 - Bedroom :5.60 m<sup>2</sup>

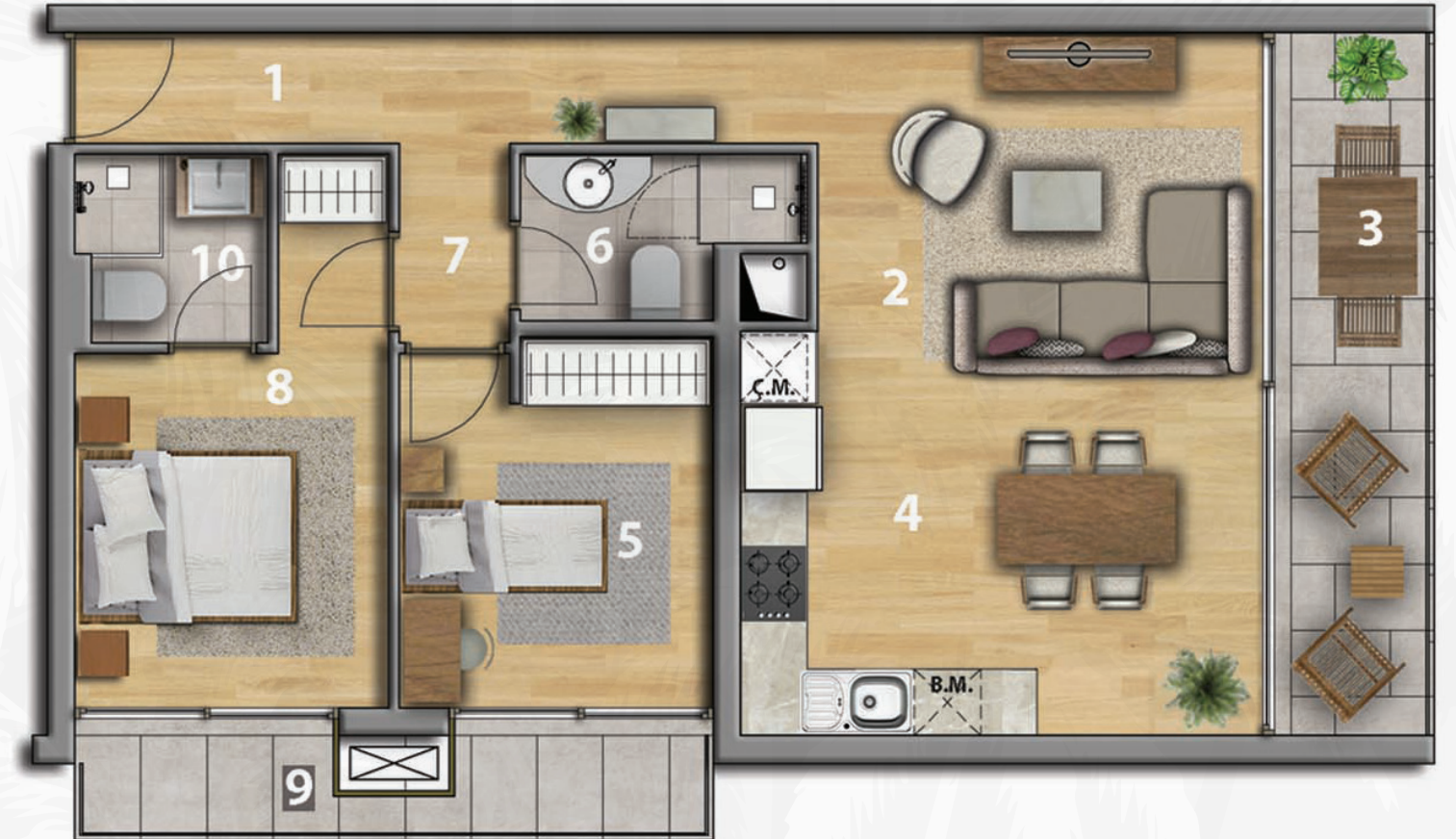
E-01 | E-03 | E-05 | E-07 | E-9 | E-11 | E-13

TYPE FLOORS (BETWEEN 1<sup>st</sup> / 7<sup>th</sup> FLOORS)



**BLOCK E  
TYPE-2  
88.15m<sup>2</sup>**

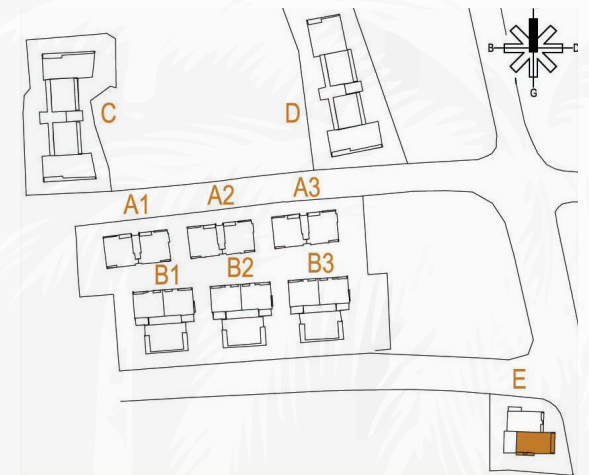
**2+1**



- 1 - Corridor :6.75 m<sup>2</sup>
- 2 - Living Room + Dining Room :21.50 m<sup>2</sup>
- 3 -Balcony :8.25 m<sup>2</sup>
- 4 - Kitchen :6.80 m<sup>2</sup>
- 5 - Bedroom :10.0 m<sup>2</sup>
- 6 - Bathroom :3.30 m<sup>2</sup>
- 7 - Hallway :1.80 m<sup>2</sup>
- 8 - Bedroom :11.0 m<sup>2</sup>
- 9 - Balcony :4.90 m<sup>2</sup>
- 10 - Balcony :3.0 m<sup>2</sup>

E-02 | E-04 | E-06 | E-08 | E-10 | E-12 | E-14

TYPE FLOORS (BETWEEN 1<sup>st</sup> / 7<sup>th</sup> FLOORS)







**Life in  
Famagusta**

---





**HEAVEN ON EARTH**

We offer you an unforgettable holiday experience, where you will indulge in the immense turquoise of the Mediterranean, the shimmering golden yellow of the beach, the merriment of colour in the sunset, under the shadow of the palm trees, and watch the sparkle of the sea under the moonlight.



**PALM BEACH**

You can enjoy the sea, sand, and sun at the Palm Beach Hotel, with its golden beach stretching to the deep blue waters of the Mediterranean, watching the colour carnival at sunset, as well as do water sports like surfing and diving.



**CASINO**

Trying your luck at the fun games of the Arkin Palm Beach Casino, with its modern and eye-catching design, will add spice and zest to your holiday.



**HOSPITALITY**

The Arkin Palm Beach Hotel & Casino creates a difference with its 5-star service quality and comfort, full of privileges it offers from the first moment it welcomes its guests.



**SURF BAR & LOBBY BAR**

Your place is ready any time of the day at the Surf Bar and Lobby Bar, which offer special cocktails, refreshing drinks and delicious snacks. The dessert break you will have on the terrace accompanied by local and foreign coffees is truly a slice of paradise.



**RESTAURANT & BEACH CLUB**

We serve on the most delicious moments of your holiday, with the Restaurant and Beach Club, which adorn your breakfasts, lunches, and dinners with distinguished delicacies from Cypriot and international cuisines.



## Art and culture & activities



### BEACH ACTIVITIES AND WATER SPORTS

At Palm Beach, you can take part in beach activities and water sports, you can also join the daily boat tours and visit the popular beaches of Famagusta.



### FESTIVALS

You can taste local Cypriot flavours by visiting the traditional Famagusta festivals, which attract the locals and tourists, as well as listen to the concerts of famous artists in the nostalgic atmosphere of historical places.



### ART AND CULTURE ACTIVITIES

Hosting various opera and ballet performances, exhibitions, theatre plays and concerts, and dance shows every year, Famagusta promises a life intertwined with culture and the arts.



### DAILY KARPASIA TRIPS

Karpasia national park is under protection with its historical and natural beauties frequently visited by the islanders to retreat to peace. The Apostolos Andreas Monastery and the Golden Sand beach which is also a breeding ground for caretta caretta are some of the rare places worth seeing on daily Karpasia trips.



## History of Famagusta



## A heavenly city hosting civilizations...



**OTHELLO CASTLE**

The Othello Castle, built by the Lusignans in the 14th century in order to protect the Famagusta Port, was named after Shakespeare's famous play Othello, and was the inspiration behind this work which gained worldwide fame. Currently the hall located in the castle hosts many cultural and artistic events.



**LALA MUSTAPHA PASHA MOSQUE**

Built during the Lusignans period, the St. Nicholas Cathedral was transformed into a mosque, and named after the Ottoman commander Lala Mustapha Pasha, who conquered Famagusta during the Ottoman period. The gothic-style cathedral, located in Namik Kemal Square in the city centre, is architecturally considered one of the most important monuments not only of the island, but also of the Middle East region.



**FAMAGUSTA PORT**

The Famagusta Port, one of the most important trade ports of the Eastern Mediterranean in every period of history, remains the symbol of the city today.

## A port in heaven that welcomes civilizations..



**SALAMIS RUINS**

The ancient city of Salamis, which was founded by migrants from Anatolia and Greece coming to the Island of Cyprus towards the end of the Bronze Age, has been used as the capital of Cyprus for many years. Located in the ancient city of Salamis, which was ruined by invasions and raids, the Forum, Roman Gymnasium, Roman Theatre, Agora (Marketplace), Zeus Temple and the tomb of Salamis kings still reflect the glory the city had in the past.





# Life in Famagusta



## RESTAURANTS

Famous for its fish restaurants and taverns, turns your meals into a feast with a wide variety of appetizers that will not leave an empty spot on the table. In Famagusta where fish and meat varieties turn into delicious flavours on the grill and barbecue and the oven kebab (kleftiko) as one of the traditional tastes.



## CAFES

As a university city, Famagusta has many cafe options, where the young population is high. Indispensable for short chats with friends and occasional business meetings, cafes offer both traditional and new alternatives to coffee, tea, and snacks.



## SHOPPING

In Famagusta City Mall you can find famous brand shops, restaurants, cinemas and much more to spend your day by shopping and entertainment.



## CINEMA

Watch and enjoy the latest movies with your family or friends in Famagusta City Mall.



## OLD CITY MARKETPLACE

To buy local souvenirs and authentic products that reflect the texture of the ancient city, you can visit the historical Old City Bazaar and stroll along the famous Salamis road while browsing the shops. You can taste all the different local flavors in the streets full of authentic restaurants and bars with Turkish cuisine, among the opportunities offered by the old city.





## Social responsibility

SOS Children's Village, as a member of SOS Kinderdorf International, is one of the world's largest, independent, non-profit social development organisations, providing family type care to children and young people in Northern Cyprus, supporting children and their families at risk of losing family care, and providing pre-school education. The Kyrenia Youth & Resource Center (GİGEM) is a non-governmental development organisation that provides education services, offers social, sports, cultural activities and capacity building training in various fields, while advocating for children's rights.

In line with its vision of corporate social responsibility, RE/MAX Golden and Arkin Group aim to provide support for the special education needs of children who have lost family care in Northern Cyprus and are taken care of in SOS Children's Village. With the income donated to Sos Children's Village Association from each sale of the Arkin Varosha Residences project, it is able to meet the educational requirements of children with special education needs.



“As pioneers in the Varosha Area, we have set out to create a high standard, contemporary and privileged life on our island.”

Following the tourism, entertainment, accommodation and education sectors, Arkin Group is now active in the construction and real estate sector with the Arkin Varosha Residences project to which it brings its high quality, vision and unchanging service understanding.

Our project, which will offer a true residential service, will be a first in the TRNC real estate sector. Mr. Erbil Arkin, Chairman of the Board of Directors of Arkin Group, summarised our 25 years of experience, our passion for production and continuous improvement with the words, “We, as pioneers in the Varosha Area, set out to create a modern and privileged life with high standards on our island.”

With this project, you will witness the re-awakening of history. **“Welcome to your new life”.**







*A new life in an  
epic city.*



**ARKIN  
VAROSHA  
RESIDENCES**

**Contact Us**

**Najan Özkan**

**+90 533 823 1234**



🔍 [arkinvarosharesidences.com](https://arkinvarosharesidences.com)



ARKIN  
VAROSHA  
RESIDENCES